



THE UNIVERSITY OF ARIZONA MUSEUM OF ART
& ARCHIVE OF VISUAL ARTS

ANNUAL REPORT

Fiscal Year 2010 - 2011

UAMA / AVA ANNUAL REPORT

Fiscal Year 2010 - 2011

Table of Contents

UAMA and AVA Mission	3
UAMA Narrative Report Fiscal Year 2010 - 2011	4
UAMA/AVA Current Profile FY 2010 - 2011	6
UAMA Attendance Data and Instructional Hours – 2010 - 2011	7
UAMA Exhibition Summary 2010 – 2011	8
Public Art Activities 2010 - 2011	10
UAMA Educational Events and Programming Fiscal Year 2010 – 2011	11
Partners Calendar of Events Fiscal Year 2010 – 2011	13
Curator- led Exhibition Tour or Special Print Viewing at UAMA	14
Host Researchers for Personal Viewing of UAMA Collection Pieces	15
UAMA Adult Outreach Programs FY 2010 – 2011	16
Tours UAMA FY 2010 – 2011	17
Acquisitions and Donations 2010 - 2011	22
Outgoing Loans 2010 - 2011	24
Rights and Reproductions of UAMA Artworks in Publication	25
UAMA & AVA in the News: Publicity 2010 – 2011	26
UAMA Information Technology Statistics Fiscal Year 2010 - 2011	32
UAMA Financial Activity Summary FY 2010 - 2011	33
UAMA Endowment Fair Market Values	37
UAMA Partners Consolidated Income Statement	38
UAMA Partners Fundraiser - Fresh Paint 2011	39
Monetary Gifts and Grants Fiscal Year 2010 – 2011	40
In Kind Contributions Fiscal Year 2010 – 2011	41
UAMA Store – Sales Statistics for Fiscal Year 2010 – 2011	43
UAMA Museum Rentals Fiscal Year 2010 – 2011	44
UAMA Staff, Student Employees, Interns, & Volunteers	46
UAMA Membership Fiscal Year 2010 - 2011	52

UAMA and AVA Mission

The University of Arizona Museum of Art (UAMA) and Archive of Visual Arts (AVA) are committed to serving the teaching, research, and service initiatives of The University of Arizona. The essence of UAMA / AVA is that we collect, preserve and exhibit primary source material, i.e. actual art objects and artist ephemera. UAMA's greatest asset – its excellent collections – give the students of UA primary art experiences unmatched on many campuses in the USA. The UAMA supplements this primary experience with programs designed specifically to be broad-based and inclusive and to add to the strength and vitality of a liberal arts experience for University of Arizona students. The Museum of Art continually seeks out and implements programs that support established University goals and initiatives and make a significant contribution to the lives of students, faculty, and the public.

As approved in May, 2005 by the VP of Research, Graduate Studies and Economic Development, the mission of the UA Museum of Art supports the University mission. The mission is as follows:

The University of Arizona Museum of Art is a forum for teaching, research and services related to the history and meaning of the visual arts for the University community, the citizens of Arizona, and visitors from around the nation and the world. The museum collects, preserves, exhibits and interprets original works of art. In all of its efforts, the museum serves as an advocate for the expressive, intellectual and sensory importance of art in society.

The mission is guided by the following principles:

- *To attain the highest quality of viewing experience, instruction, research, scholarship, and museum practice for our constituents.*
- *To develop, care for, exhibit and use the permanent collection and other collections in order to increase understanding of the history and meaning of the visual arts.*
- *To advance programs which reflect the University's commitment to diversity and to global partnerships.*
- *To provide professional museum training and internship programs to students.*
- *To provide a center for life-long learning through discovery.*
- *To promote the quality of life in Arizona, and to support the economic development of our community.*

UAMA Narrative Report Fiscal Year 2010 - 2011

The University of Arizona Museum of Art (UAMA) and Archive of Visual Arts (AVA) are phenomenally resilient organizations. That resiliency is evident on every page of the Fiscal 2010 – 2011 UAMA & AVA Annual Report. After the devastating budgetary and staff cuts of two years ago, UAMA has learned to work differently and in the process to achieve our educational goals and initiatives in new and inventive ways.

UAMA's success is due to the dedication and passion of the staff, Docents, Partners Board and Advisors, Committee volunteers, interns, student workers and community volunteers, as well as the many financial supporters from the Tucson community. UAMA & AVA are fortunate to have such committed people who care so deeply about the educational impact and cultural contributions of UAMA. UAMA's premier art collection is matched by the outstanding contributions of UAMA's many supporters.

In spite of the uncertain environment, UAMA has made progress in contributing to the four University Strategic Directions.

Direction One: Expanding Access and Enhancing Educational Excellence

UAMA continues to expand access to the educational excellence that only an art museum can provide, i.e. offering direct student interaction with original works of art and scholarly programs, as well as opportunities for student exploration of museum jobs and activities. From curatorial research to collection care, educational tour logistics, outreach development, library accessibility, and Museum marketing, UAMA provided 11,393 instructional hours to city-wide university students and interns (including 8521 hours to UA students and interns). More UA faculty and faculty city-wide recognized the value of the direct gallery experience and made assignments in UAMA galleries an integral part of their teaching.

UAMA partnered with multiple departments in the development of UAMA exhibitions and programs. Of special note was **The Aesthetic Code: Unraveling the Secrets of Art** that was co-curated with faculty and students from UA Mathematics Department. The concept of the exhibition became part of the permanent curriculum of Tucson Unified School District's Opening Minds Through the Arts program. One hundred thirty teachers were trained in utilizing the exhibition concepts and catalogue as a tool to enhance learning in science and math.

In addition to ensure an expanded educational benefit to all UAMA visitors extended labels were developed for all exhibitions. These labels give unprecedented context to the art on view and enhance the gallery experience of all.

Direction Two: Increasing Achievements in Research, Scholarship, and Creative Expression

The scholarship surrounding the centerpiece of the UAMA collection, the **Altarpiece of Ciudad Rodrigo**, was taken nationally (and to the general public) this year. In collaboration with Arizona Public Media, the hour long documentary, entitled **The Secrets of the Divine**, chronicled the five-year research project that explored the origins and mysteries of the **Altarpiece of Ciudad Rodrigo**. The research was an international collaboration consisting of the UAMA in Tucson, Arizona; the Meadows Museum in Dallas, Texas; the Kimball Art Museum in Fort Worth, Texas; the Museo Nacional del Prado in Madrid, Spain, and the Getty Research Institute in Los Angeles, California. The cinematographers traveled to Tucson, Dallas/Fort Worth, Los Angeles, Madrid, Salamanca and Ciudad Rodrigo in Spain and the English countryside to capture the history of the altarpiece. The film presents a rare view of science and the arts working together to solve a 500-year-old mystery.

The film was produced locally by Emmy- award winner Sooyeon Lee Johnston with voice-over narration by NPR special correspondent, Susan Stamberg and grant support by The Samuel H. Kress Foundation. The production aired locally in November and nationally in April in PBS markets. The film continues to be available on the internet and in the UAMA galleries.

Direction Three: Expanding Community Engagement and Workforce Impact

UAMA has continued to expand its community engagement. This impact can be gaged by UAMA's 16% increase in attendance, 32% increase in UAMA events (with 95% increase in event attendance), 74 % increase in museum gallery tours (with a 53% increase in tour attendance), 13% increase in docent-led outreach presentations (with a 39% increase in outreach attendees), 34% increase in Museum memberships, and a 15% increase in unique visitors to the UAMA website.

Over the past two years UAMA has been converting from communicating with the community by hardcopy newsletters to Constant Contact email communications. The email list has expanded by 27% in the last 6 months and thanks to the dedication of a UA student, UAMA is now on Facebook! The increase event programming meant the UAMA had a 63% increase in major PR hits. The challenge into the future is to maintain community engagement by integrating web, Facebook, and traditional media contact without a dedicated Marketing staff position.

UAMA continues to expand the repertoire of how it engages with the community. A recent move to presenting UAMA videos on You Tube multiples our contact with the public. Another noteworthy event this year was **UAMA After Dark**. Originally conceived as a program to engage University students in a sampling of UAMA exhibitions, presentations and hands-on activities **UAMA After Dark** engaged the full spectrum of the public - from young student to senior citizen- and indicated a desire by the public to be actively engaged and participatory in their learning experience.

UAMA's immediate workforce impact is limited to offering 21 job opportunities for student employees. The true impact of these jobs is in the skills they are building that the student can tap into in his future career. Responsibility is the foremost requirement, since many of the positions are for student security monitors. Students supply the equivalent of 3.9 full time positions. UAMA is rightfully proud of the job skills that are learned whether as a student employee or as a student intern. UAMA has a history of giving future museum professionals their first museum work experiences.

Direction Four: Improving Productivity and Increasing Efficiency

It goes without saying that in spite of the decrease in staff (six in 2008-2009 and an additional half position this year) the fact that UAMA has maintained an exhibition schedule of 21 new changing exhibitions a year plus the increase in programming, tours, interns, and University and general attendance means that UAMA has utilized every means possible to improve productivity and increase efficiency. Each iterative effort to "share the load" by engaging interns in the vital aspects of running the museum (such as researching art and being student curators) comes at a cost to the available time of the supervising staff member. The net result is that engaging a spectrum of students, interns, student volunteers and community volunteers has enriched UAMA programs.

UAMA is very proud of all the individuals who contributed to the success of fiscal year 2010 – 2011. It has been a collaborative / productive year. With the hope of a more stabilized and predictable future, UAMA will be able to plan for continued success and refine and build on its current achievements.

UAMA/AVA Current Profile FY 2010 - 2011

Significant new UAMA events	"Secrets of the Divine" documentary national debut "Fresh Paint" Partner fundraiser for year AVA building renovation begun Approval for half-time director of development IT position - permanently lost funding Mix of free, free with admission and fee programs Zip code study of UAMA visitors
Attendance – 2010 – 2011	24,810 38% Total Attendance is UA associated 11,393 city-wide instructional hours
Special Events (Rentals)(Attendance by campus & city-wide groups)	13 events / 11 academic related 230
Major PR articles (Local, regional and national)	70
UAMA Web Presence (Internet hits on UAMA website) Calendar 2010	66,238 first time visitors 73,168 unique visitors
Exhibitions: on view in FY 2010- 2011	21
Collections: Purchased	\$162,650.00
Collections: Donations	\$75,100.00
Education (Programming for UA classes, campus community and the public)	54 events (including 28 guitar concerts/ 4 openings - receptions/4 fee events/18 other) 4233
Education: In-museum tours	(211 tours) 4679 individuals
Education: Outreach-Adults and Seniors	(18 presentations) 611 individuals
Education: Outreach – Family/Teachers/Youth programs	Cancelled since 08- 09
Volunteers: Departmental positions	8 positions (Contributing 491 hours/ 7 volunteers)
Volunteers: Docents	43 docents (3017 hours = ~1.5 FTE)
Volunteers: National Advisory Council Steering Committee	11
Volunteers: Partners Board and Advisors	29 members (Hours - not tabulated)
Volunteers: UA Public Art Committee	7
Volunteers: UAMA Collections Committee (Gallagher Com.)	9
Student Interns: Graduate and undergraduate positions	16 positions (2025 instructional hours / 11 students)
Student Employees: Student positions (Designed to provide students museum work experience)	21 positions 7, 683 hours = 3.9 FTE
Grant Funded Programs 2010 - 2011 (AAM Curator's Conf.)	\$1,000
Cash Additions (State, Local, Partners, Members, Gifts, and Endowment Income) Includes restricted, special purchase funds & transfers from UA Foundation	\$1,614,653.00
Fundraiser: Fresh Paint (in association with Partners Board)	\$39,590 net contribution (\$64,369 rev./\$24,779 FY 10-11 exp.)
UAMA Store Gross Profit / Net Income	Sales/Gross profit / Net income after all expenses \$13,980.77/\$7,608.36/\$2000
Endowments (Market Values of UA and UA Foundation Accounts/Restricted Gifts)	\$9,990,320.00
General Membership	55 Memberships (95 Members)*
Partner Membership	157 Memberships (261 Members)*

*Family & couple memberships encompass 2(+) members.



Ana Thiel



The Aesthetic Code

UAMA Exhibition Summary 2010 – 2011

Legend: *Accompanied by Catalog (sale) and/or Gallery Guide (free)
 † Organized and curated by UAMA curatorial staff
Italics – drawn from the permanent collection

Exhibitions: Continued from FY 2009 – 2010

American Innovations: The New Art 10/1/2009 – 8/8/2010 †
 (2nd floor, Gallagher)

Portraits and Figurative Works from the UAMA Permanent Collections 2/6/10 – 1/12/11 †
 (2nd floor, Pfeiffer)

Master Impressions from the UAMA Collections: Felix Hilaire Buhot 4/30/2010 – 8/15/2010 †
 (2nd floor, Kress Wall)

Metropolis 5/27/2010 – 10/31/2010 †*
 (1st floor, Combo – Main and Hanson)

Pictures of the Floating World: Life in 19th Century Japan 6/24/2010 – 10/6/2010 †
 (2nd floor, Combo – Mezzanine and McCall)

Exhibitions: New in 2010 – 2011

20th Century Art from the Permanent Collection 8/27/2010 – 1/30/2011 †
 (2nd floor, Gallagher)

Master Impressions from the UAMA Collections: Honoré Daumier 8/31/2010 – 1/30/2011 †
 (2nd floor, Kress Wall)

Post Secret: Confessions on Life, Death and God 10/12/2010 – 12/12/2010
 (2nd floor, Combo – Mezzanine and McCall)

The Aesthetic Code: Unraveling the Secrets of Art 11/12/2010 – 4/10/2011 †*
 (1st floor, Combo – Main and Hanson)

Max Klinger: Paraphrases on the Finding of a Glove 12/16/2010 – 1/30/2011 †
(2nd floor, Mezzanine)

20th Century Sculpture from the Permanent Collection 12/22/2010 – 1/30/2011 †
(2nd floor, McCall)

Arthur Diehl: “Friends, I Greet You!” 1/20/2011 – 8/7/2011 †
(2nd floor, Pfeiffer)

*Master Impressions from the UAMA Collections:
Giovanni Battista Piranesi* 2/2/2011 – 5/1/2011 †
(2nd floor, Kress Wall)

Ana Thiel: Layers of Being, A 30-yr Retrospective 2/12/2011 – 5/29/2011 †
(2nd floor, Combo – Mezzanine, McCall, and Gallagher)

**Fresh Paint:
Celebrating Southern Arizona’s Artistic Talent** 2/26/2011 – 2/26/2011
(1st floor, Combo – Main and Hanson)

UA School of Art MFA Thesis Exhibition 2011 4/15/2011 – 5/15/2011
(1st floor, Combo – Main and Hanson)

*Master Impressions from the UAMA Collections:
Jan Saenredam and The Story of Adam and Eve* 5/4/2011 – 7/31/2011 †
(2nd floor, Kress Wall)

Andreas Nottebohm: Raw Metal 5/26/2011 – 9/11/2011 †
(1st floor, Main)

Andreas Nottebohm and Robert McCall: NASA Days 5/26/2011 – 9/11/2011 †
(1st floor, Hanson)

Contemporary Prints from the UAMA Collections 6/9/2011 – 10/3/2011 †
(2nd floor, Mezzanine and McCall)

20th Century Works from the Permanent Collections 6/9/2011 – 10/9/ 2011 †
(2nd floor, Gallagher)



Metropolis



Arthur Diehl



Andreas Nottebohm

Public Art Activities 2010 - 2011

Campus Artwork Restoration

During 2010-2011, the UA Public Art Advisory Committee approved plans and funds for the restoration of *Table of the Sun* by John Young. Last year UAMA noticed unexpected deterioration in the central boulder and a pyrite vein was found in the rock. John Young contacted the quarry and they agreed to provide a new boulder. John worked closely with the quarry and decided to change the shape of the boulder from a sphere to a cube. The new boulder safely arrived in Tucson and John Young supervised the installation. The result is a transformed sculpture now titled *Table of the Sun Cubed*.



Centennial Sculpture Annual Competition

The Centennial Sculpture Award began in 1985 to commemorate the University of Arizona's Centennial celebration. Each year, sculpture students who are in the UA School of Art MFA program are invited to present proposals for a temporary sculpture installation on campus. Students make site-specific proposals for works of art that invite discussion and add a sense of community and place to the campus environment.

The Public Art Advisory Committee (PAAC) works closely with the School of Art to review, support, and manage the annual Centennial Sculpture Competition. After reviewing written proposals and scale-sized models, committee members interview students about their proposed installations. The committee chooses one sculpture to be installed on campus for at least one year. The award comes with a stipend to help cover the costs of producing and installing the sculpture. The UA Museum of Art and Public Art Fund defray some of this cost with an annual contribution of approximately \$1500.00

Austin Martin was the 2009-2010 Centennial Sculpture Award winner but his sculpture is still in process and will be installed fall 2011 in front of the Main Library.



Faculty at the UA Art Department decided to delay the Centennial Sculpture competition for this fiscal year and hope to review proposals in fall 2011.

UAMA Educational Events and Programming Fiscal Year 2010 – 2011

UAMA strives to provide a variety of events associated with the year's exhibitions and UAMA collections. UAMA has developed a mix of free, free with admission and fee events and programming in an effort to make UAMA available to all, while at the same time enlisting the help of the public in the financial support of the Museum.

Date	Event or Programming	Attendance
Sept. 8, 2010	Barbara Kosta, Tradition and Technology:Conflicting Visuals in Metropolis	120
Sept. 15, 2010	Public Art Tour	7
Sept. 20, 2010	Douglas Trumbull: A History of Special Effects in Film	335
Sept. 25, 2010	Museum Day 2010	140
Oct. 11, 2010	Caroline Nelson, The Visual Legacy of Fritz Lang's "Metropolis"	34
Oct.20, 2010	Public Art Tour	14
Oct. 21, 2010	Dr. David Soren, The Hidden Story of Metropolis: Tophets, Hermann Muthesius & Max Reinhardt	37
Nov. 12, 2010	Partners Melanie Stimmel Receptions	52
Nov. 12 – 14, 2010	Melanie Stimmel: 3 Day Street Painting Demonstration	825
Nov. 17, 2010	Public Art Tour	18
Jan. 8, 2011	Indoor/Outdoor Sculpture Tour / Cancel Gifford's Shooting	0
Jan. 20, 2011	Arthur Diehl: "Friends, I Greet You!" with talk by Granddaughter Genii Pell	58
Jan. 26, 2011	Jackson Pollock & The Fractal Theory: Truth or Fiction Bruce Bayly and Jonathan Cain	200
Feb. 16, 2011	Public Art Tour	38
Feb. 18, 2011	Ana Thiel: Layers of Being	91
Feb. 26, 2011	Fresh Paint 2011 (fundraiser)	592
Mar. 3, 2011	Sean Paul Pluguez: Gallery Talk	24
Mar. 12 – 13, 2011	Festival of Books	300
Mar. 16, 2011	Public Art Tour	15
Mar. 31, 2011	UAMA After Dark: an arts extravaganza	104

Apr. 9, 2011	Ana Thiel: Layers of Being in association with Tucson Glass Festival	15
Apr. 11, 2011	Secrets of the Divine Discussion with Sooyeon Lee, Dr. Albrecht Classen and Charles Guerin	105
Apr. 20, 2011	Public Art Tour	19
Apr. 21, 2011	UA School of Art MFA 2011 Exhibition Reception	271
Apr. 30, 2011	Teacher Day at UA	52
May 17, 2011	Call for Volunteers	6
Jun. 15, 2011	UAMA Tour through Campus Visitor's Center	4
Sept 2010 – May 2011	Guitar Recitals in UAMA Retablo Gallery (28 recitals) **	757
Total 26 Completed Events	(One event cancelled.)	Total Attendance 4,233

** Every Friday during regular fall and spring semesters, UAMA hosted guitar recitals in the Retablo Gallery. The concerts are a partnership between the UAMA and the UA School of Music guitar students under the tutelage of Dr. Tom Patterson. The 45 minute concerts feature accomplished students performing in a unique space, “The Altarpiece of Ciudad Rodrigo.” The public is welcome to attend.



Melanie Stimmell three days of pastel work



Genii Pell talks about her grandfather, Arthur Diehl
On right, Anna Walcutt, student curator of Diehl exhibit



UAMA After Dark



UAMA Booth at Tucson Festival of Books

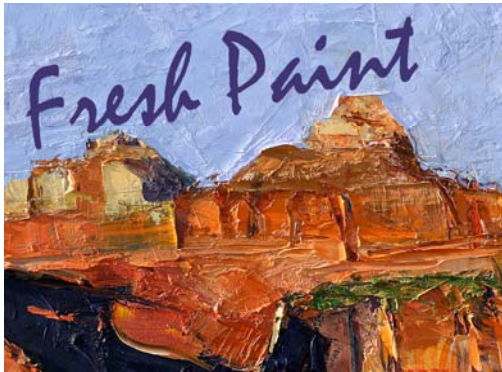
Partners Calendar of Events Fiscal Year 2010 – 2011

The Partners social calendar adds a special and unique dimension to the usual UAMA offerings. The schedule of Partners events is developed by the Partners Board for the enjoyment of the Partners membership. Included in each year’s roster are invitations to these exclusive events: receptions, artist studio tours, day trips to nearby cities, private home and collection tours, and specialty tours of art in a “destination” city (this year’s choice - Dallas / Ft.Worth). Each year’s offering also includes a fundraiser for the benefit of UAMA’s exhibits and educational programs.

DATE	Event	ATTENDANCE
November 3, 2010	Partners Membership Reception at home of Larry Deutsch & Bill Parker	134
December 8, 2010	Studio Tour with Artist Susan Gamble	34
January 12, 2011	Artist Studio Tour - Philabaum Glass Gallery & Studio	40
February 26, 2011	Fresh Paint (fundraiser)	592
March 9, 2011	Day Trip to Rancho Linda Vista	40
March 15, 2011	Partners Board to Board Reception at UAMA	34
March 21-24, 2011	UAMA Partners: Dallas/ Ft Worth Art & Architecture Trip	21
April 13, 2011	Foothills Art and Architecture – Marmis / Joyce Homes	48
April 28, 2011	Partners / Donor Reception at UAMA	20
May 4, 2011	Regional Artists Collection - Maxfield Home	36

TOTAL

1,001



Fresh Paint



Partners / Donor Reception at UAMA



Partners Membership Reception
Bill Parker, Jaime Burke (Partners Chair),
Charles Guerin (UAMA Director) and Larry Deutsch

Curator- led Exhibition Tour or Special Print Viewing at UAMA

List of classes that visited UAMA for a private viewing during fiscal year 2010/11:

**each class approximately 20 students unless otherwise noted

Debra Gregerman's Honors English class (for curator-led tour of Metropolis exhibition) Thursday, September 2, 11:00 – 12:30 pm	20
Barbara Kosta's German Studies class (for curator-led tour of Metropolis exhibition) Wednesday, September 8, 3:00 – 4:00 pm	20
Patrick Baliani's Honors English class (for his reading of <i>Red</i> in front of the Rothko) Thursday, September 9, 11:00 – 12:00 noon	20
Patrick Baliani's Honors English class (for his reading of <i>Red</i> in front of the Rothko) Thursday, September 9, 12:30 – 1:30 pm	20
Cerese Vaden's Printmaking class (print viewing) Thursday, September 16, 3:15 – 4:00 pm	20
Christina McNearney's Art History class (PIMA) (for curator-led tour of Japanese print exhibition) Wednesday, September 22, 11:00 – 12:00 noon	20
Maira Geoffrion's Figure Drawing class (drawing viewing) Thursday, September 23, 9:00 – 10:30 am	20
Albert Stewart's Art History class (PIMA) (curator introduction – Albert talked about Retablo) Thursday, September 23, 11:00 – 1:00 pm	20
David Andre's Gallery Management class (PIMA) (talk on museum curator's role) Friday, October 1, noon – 1:00	20
Albert Stewart's Art History class (PIMA) (curator introduction – Albert talked about Retablo) Friday, October 8, 12:30 – 2:30 pm	20
Joe Hatton's Art class (PIMA) (for curator-led tour of Metropolis) Friday, October 22, 9:15 – 10:15 am	20
Debra Gregerman's Honors English class (print viewing class) Wednesday, February 2, 2:00 – 3:30 pm	20

Opening Minds Through the Arts Tuesday, February 22, 3:00 – 5:00 pm 130 TUSD teachers were trained to use “The Aesthetic Code: Unraveling the Secrets of Art” as part of their permanent curriculum	130
Cerese Vaden’s Watercolor class (watercolor viewing) Thursday, March 3, 11:00 – 1:00 pm	20
Susan Crane’s History class (curator introduction; students worked independently on “The Aesthetic Code”) Thursday, March 10, 2:00 – 3:00 pm	20
David Andre’s Gallery Management class (PIMA) (talk on museum curator’s role) Friday, March 25, noon – 1:00 pm	20
Dimitri Kozyrev’s MFA art class (talk on the role of the curator in contemporary art) Friday, May 27, 10:00 – 11:00 am	20

17 presentations	attendees	450
------------------	-----------	-----

UA

5 classes @ 1 hour x 20 students	=	100 instructional hours
3 classes @ 1.5 hours x 20 students	=	90 instructional hours
1 class @ .75 hours x 20 students	=	15 instructional hours
<hr/>		
9 classes		205 instructional hours

PIMA

4 classes @ 1 hour x 20 students	=	80 instructional hours
2 classes @ 2 hours x 20 students	=	80 instructional hours
<hr/>		
6 classes		160 instructional hours

OTHER

1 class @ 2 hours x 130 teachers	=	260 instructional hours
----------------------------------	---	-------------------------

Host Researchers for Personal Viewing of UAMA Collection Pieces

Monday, June 27, 2011 Marie di Palma, Pima Community College student, viewed 4 Piranesi etchings

Tuesday, April 26, 2011 Jim Lewandowski, Crosier Community of Phoenix, viewed G. Stuart, *St Jude (Baglione)*, Crespi *Annunciation* in Kress

UAMA Adult Outreach Programs FY 2010 – 2011

Date	Venue	Attendance	Presenter	Presentation	Zip Code
July 22, 2011	Santa Catalina Villas	25	C. Rivers	Impressionists	85718
August 19, 2011	Santa Catalina Villas	27	J. Stein	Just a Taste	85718
August 24, 2011	Villa Hermosa	15	J. Stein	Just a Taste	85710
September 14, 2011	River Library	26	J. Stein	Just a Taste	85750
September 23, 2011	Martha Cooper Library	6	C. Rivers	Women Artists	85712
October 12, 2011	River Library	28	R. Young	Metropolis	85750
November 9, 2011	River Library	35	B. Farmer	Textiles & Textures	85750
December 14, 2011	River Library	32	J. Stein	Retablo	85750
January 11, 2011	River Library	46	C. Rivers	Abstraction	85750
February 8, 2011	River Library	56	T. Bearden	Western Expansion	85750
February 8, 2011	AZ Inn	75	C. Petrozzello	Intro. to UAMA	85719
February 9, 2011	Santa Catalina Villas	16	J. Stein	Retablo	85718
February 15, 2011	AZ Inn	87	C. Rivers	Impressionists	85719
March 8, 2011	River Library	62	F. Chen; M. Williamson	Portraits	85750
April 12, 2011	River Library	22	T. Bearden	Cultural Diversity	85750
May 10, 2011	River Library	28	J. Stein	Mexican Art	85750
June 14, 2011	River Library	25	C. Petrozzello	Farm to Factory	85750

Totals: 18 presentations with 611 attendance



Carol Petrozzello, Curator of Education



Johanna Stein & Carolyn Rivers



Docent Luncheon: Betsy Farmer

20	09/03/10	UA Digital Art	college	15		x
21	09/03/10	UA English	college	20		x
22	09/03/10	UA class	college	10		x
23	09/03/10	UA Honors Quest	college	8		x
24	09/09/10	UA School of Art	college	11		x
25	09/09/10	UA New Start	college	50		x
26	09/09/10	UA Honors College	college	10		x
27	09/10/10	Art Institute	college	13		x
28	09/12/10	UA Honors College	college	16		x
29	09/12/10	PCC	college	16	2	
30	09/15/10	UA Art School	college	12		x
31	09/22/10	PCC-Art Appreciation	college	25		x
32	09/24/10	PCC	college	20		x
33	09/24/10	PCC -Humanities	college	24		x
34	09/24/10	PCC	college	26	3	
35	09/28/10	UA - writing class	college	14		x
36	09/30/10	PCC	college	30		x
37	10/01/10	UA class	college	46		x
38	10/01/10	UA English	college	24		x
39	10/05/10	UA - CESL	college	13		x
40	10/06/10	UA -Art Ed	college	18		x
41	10/08/10	PCC Art history	college			x
42	10/12/10	UA CESL	college	20		x
43	10/13/10	UA - English	college	23		x
44	10/14/10	PCC - art class	college	25		x
45	10/14/10	PCC	college	10		x
46	10/14/10	PCC	college	28	1	
47	10/23/10	PCC-Basic Design class	college	23		x
48	10/26/10	Art Institute	college	20		x
49	10/27/10	PCC - Theater design	college	7		x
50	10/27/10	PCC _ Art class	college	12		x
51	10/29/10	UA - freshman intro	college	20		x
52	11/02/10	UA Honors class	college	25	4	
53	11/03/10	PCC	college	15		x
54	11/03/10	PCC - art class	college	30		x
55	11/04/10	Cochise College	college	8		x
56	11/04/10	PCC - Art history class	college	15		x
57	11/17/10	Cochise College	college	12		x
58	11/19/10	UA- freshman intro	college	35		x
59	12/02/10	PCC	college	7		x
60	12/02/10	UA - CESL	college	13		x
61	12/03/10	UA - CESL	college	7		x
62	12/04/10	PCC -Intro to Art	college	10		x
63	02/04/11	PCC-photography	college	13		x
64	02/09/11	PCC	college	16		x
65	02/10/11	PCC	college	25		x
66	02/15/11	PCC	college	25		x
67	02/18/11	UA CESL	college	14	2	
68	03/01/11	UA Art Ed	college	22	2	
69	03/05/11	PCC	college	16	2	
70	03/11/11	PCC	college	25	2	

71	03/21/11	UA- Art School	college	20		x
72	04/02/11	PCC	college	17		x
73	04/06/11	PCC-Exploring Learning	college	15		x
74	04/07/11	UA -English	college	17		x
75	04/09/11	Cochise College	college	15		x
76	04/13/11	Cochise College	college	11		x
77	04/15/11	PCC	college	16		x
78	04/15/11	Art Institute	college	9		x
79	04/20/11	PCC	college	15		x
80	04/20/11	PCC	college	30		x
81	04/20/11	UA-Digital Art	college	20		x
82	04/22/11	PCC	college	18	1	
83	04/23/11	PCC	college	13		x
84	04/27/11	UA - School of Art	college	15		x
85	04/27/11	Art Center Design College	college	26		x
86	04/30/11	PCC	college	15		x
87	05/04/11	PCC	college	16		x
88	05/07/11	PCC	college	5		x
89	05/20/11	UA- Humanities	college	12		x
90	06/10/11	UA- English	college	13		x
91	06/17/11	UA MedStart	college	19		x
92	06/24/11	UA New Start Prg	college	23		x
92 College Tours - 11 docent-led / 81 self-guided				1635		

SECONDARY Tours						
	Date	Name of Tour	Level/Age	How Many	Docent	Self
1	07/07/10	LaPetite Academy	gr5-11	17	2	
2	07/27/10	UA English	high school	19		x
3	07/28/10	UA Summer Institute	high school	51		X
4	07/29/10	UA Writing Skills	high school	8		x
5	07/30/10	Kids First Pre-School	ages 5- 11	28	3	
6	08/05/10	Boy Scouts	high school	11		x
7	08/13/10	UA high school intro class	high school	9		x
8	09/14/10	Cienega HS - Spanish Class	high school	27	1	
9	09/23/10	Ameri Schools Academy	middle school	18		x
10	10/13/10	Cienega HS	high sch	36	4	
11	10/15/10	Cienega HS	high school	35	4	
12	10/20/10	Salpointe HS	high school	115		x
13	11/05/10	Pueblo HS	high school	9		x
14	11/09/10	Cienega HS	high school	25	5	
15	11/10/10	Cienega HS	high school	31	4	
16	11/12/10	Buena High School	high school	20		x
17	11/16/10	Chet-Si	gr 6-12	26	2	
18	11/23/10	Museum of the Visual Arts	high school	20		x
19	12/01/10	Cienega HS	high school	17	2	
20	12/15/10	Mansfield Middle School	age 13	31	2	
21	01/27/11	Patagonia Public School	gr 9-12	34	6	
22	01/28/11	Douglas HS	high school	23		x
23	01/28/11	Buena High School	high school	33	2	
24	02/10/11	Alta Vista H.S.	high school	33	3	

25	02/10/11	Altar Valley Middle School	gr 8	4		x
26	02/11/11	City High School, group 1	gr 9	30	2	
27	02/11/11	City High School, group 2	gr 9	30	2	
28	02/15/11	Alta Vista H.S.	high school	33	3	
29	02/18/11	Manos a la Obre Int'l School	gr 7-11	19		x
30	03/02/11	Tucson H.S.-group1	high school	30	5	
31	03/02/11	Tucson H.S.-group2	high school	30	5	
32	03/04/11	Tucson Int'l	high school	16		x
33	03/09/11	Khalso Montessori School, group 1	gr 7,8	41	3	
34	03/09/11	Khalso Montessori School, group 2	gr 8	41	3	
35	03/17/11	Empire H.S.	high school	17	2	
36	03/29/11	Miles E.L.C. Middle School, group 1	gr 6,7,8	33	2	
37	03/31/11	Miles E.L.C. Middle School, group 2	gr 6,7,8	32	2	
38	04/01/11	City HS, group 1	high school	22		x
39	04/01/11	City H.S., group 2	high school	25	2	
40	04/01/11	St Gregory School	gr 7,8	9		x
41	04/06/11	Amphi Middle School	gr 8	10		x
42	04/07/11	City H.S., group 2	high school	24	1	
43	04/08/11	Desert View HS, group 1	high school	55	3	
44	04/08/11	Desert View HS, group 2	high school	54	3	
45	04/08/11	Roskruge Bilingual Middle School	gr 6,7,8	9		x
46	04/12/11	Desert Christian Middle School	gr 6-8	30	3	
47	04/13/11	Salpointe HS	high school	7		x
48	04/19/11	Salpointe HS, group 1	high school	33	2	
49	04/19/11	Salpointe HS, group 2	high school	33	3	
50	04/27/11	UA-class for high schoolers	gr 9-12	16		x
51	05/03/11	Roskruge Middle School	gr 6,7,8	22		x
52	05/06/11	Mansfield Middle School	gr 6-8	38	4	
53	05/07/11	LaJoya Community HS	high school	11	1	
54	05/07/11	Mansfield Middle School	gr 8	20		x
55	05/24/11	Achieve Builds Confidence	N/A	4		x
56	06/01/11	LDS Church	gr 6,7,8	7		x
57	06/10/11	PSA-Art Awakenings	ages 11-13	7		x
58	06/10/11	UA-Poetry Center Outreach	gr 6-8	15		x
59	06/22/11	UA Speech Dept.	high school	8		x
60	06/23/11	Baboquivari HS	gr 9	22		x
61	06/23/11	"Achieve"	?	6		x
62	06/28/11	Nosotros Academy	high school	14	1	
63	06/30/11	LaPetite Academy	gr 6-11	30	2	
		63 Secondary Tours - 34 docent-led / 29 self-guided		1563		

ELEMENTARY Tours						
	Date	Name of Tour	Level/Age	How Many	Docent	Self
1	07/05/10	29th St mini Skool	ages 5-12	17	2	
2	07/07/10	Amphi Community Ext. School	Kdg-5	30	4	
3	07/08/10	Amphi Community Ext. School, #1	kdg-12	30	3	
4	07/09/10	Amphi Community Ext. School, #2	Kdg-12	30	3	
5	07/30/10	LaPetite Academy	ages 5-12	22	3	
6	08/09/10	Community Transition Prg	elem	7		x

7	10/14/10	Ameri Schools Academy	elem	15		x
8	10/14/10	Henry Elem School	gr five	30	4	
9	11/16/10	Academy Del Sol, group 2	gr 4,5,6	48	3	
10	11/16/10	Academy DelSol, group 1	gr 5,6,7	22	2	
11	11/17/10	Academy Del Sol group 3	gr 1,2	20	1	
12	11/18/10	Academy Del Sol, group4	kdg	31	4	
13	11/23/10	Green Fields School	gr 5	13	1	
14	12/02/10	Sts Peter & Paul School	gr 5	53	5	
15	12/03/10	Mansfield Middle School	gr 6	33	2	
16	01/11/11	Green Fields	gr 4	12		x
17	01/26/11	Children's Endeavors	kdg	8	1	
18	02/02/11	Alhambra HS	gr 11	6		x
19	02/18/11	Davis Bilingual Magnet School	gr 3	59	6	
20	02/22/11	White Elem School	gr 5	30	3	
21	03/12/11	Church group	gr 3	11		x
22	03/17/11	Robison Elem School	gr 2	54	3	
23	03/25/11	Aqua Caliente Elem School, group 1	gr 5	44	4	
24	03/25/11	Aqua Caliente Elem School, group 2	gr4	43	4	
25	03/30/11	St. Cyril School	gr 5,6	115	6	
26	04/01/11	Lineweaver Elem School	gr 3	33	5	
27	04/07/11	Cragin Elem School	gr K-3	45	3	
28	04/08/11	LaPaloma Academy	gr 2	30	3	
29	04/16/11	UA Art Dept/Wildcat Art	family	40	1	
30	04/29/11	Nash Elementary School	gr 5	35		x
31	05/05/11	Sam Hughes Elem School	gr 3	35	3	
32	05/06/11	Sam Hughes Elem School	gr 4	24	2	
33	05/10/11	Grijalva Elem School	gr 2	18	2	
34	05/11/11	Vail School	gr 5	66	3	
35	06/03/11	PSA-Art Awakenings	ages 6-10	8		x
36	06/24/11	UA Poetry Center	gr4,5	9		x
37	06/28/11	Tucson JCC	campers	18		x
		37 Elementary Tours - docent-led / 9 self-guided		1144		

UAMA Tour Totals Fiscal Year 2010 - 2011

			% of total
Total tours	211		
Docent Tours	87	41%	
Self Tours	124	59%	
Total attendees	4679		
Elementary	1144	24%	
Secondary	1563	33%	
College	1635	35%	
Adult	337	7%	

Acquisitions and Donations 2010-2011

Donations

Bohdan Osyczka
94 WN/13
Watercolor on paper
Gift of Mimi Osyczka
in memory of Bohdan O. Osyczka

Bohdan Osyczka
85 WN/105
Watercolor on paper
Gift of Mimi Osyczka
in memory of Bohdan O. Osyczka

Raphael Collazo
Arc (K), 1985
Mixed media on wood panel
In Memory of Peter Bermingham;
Gift of the Tucson Museum of Art

Robert McCall
Apollo-Soyuz
Sketch and stamp
12 Boxes archival material
Gift of the McCall Family in memory of
Robert McCall

Total Gifts: \$75,100

Sam Francis
Untitled (Self Portrait)
gouache on paper
Gift of the Sam Francis Foundation

Sam Francis
Untitled
ink on paper
Gift of the Sam Francis Foundation

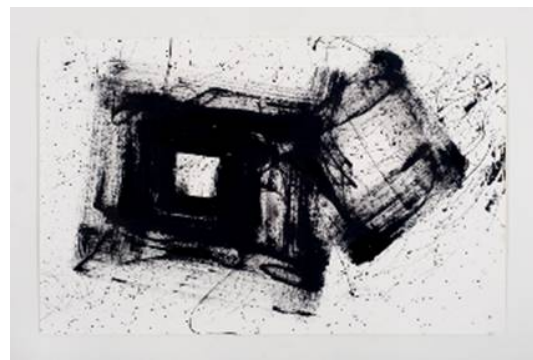
Sam Francis
Untitled
lithograph
Gift of the Sam Francis Foundation

Sam Francis
Untitled
aquatint
Gift of the Sam Francis Foundation

Christopher Wool
Untitled
Triptych, drawing
Gift of the Sam Francis Foundation



Bohdan Osyczka, *94 WN/13*



Sam Francis, *Untitled*



McCall, *Apollo-Soyuz*

Purchases

Mark Pomilio

House Divided

Folded work on paper

Museum Purchase with Funds Provided By the Edward J. Gallagher, Jr. Memorial Fund

Audrey Flack

Study for Marilyn (Vanitas) II, 1977

Cibachrome

Museum Purchase with funds provided by the Edward J. Gallagher, Jr. Memorial Fund

Audrey Flack

Ars Victoria

Bronze

Museum Purchase with funds provided by the Edward J. Gallagher, Jr. Memorial Fund

Total Purchases: \$162,650



Audrey Flack, *Study for Marilyn (Vanitas) II*

Total Gifts and Purchases: \$237,750

Outgoing Loans 2010-2011

Giovanni Battista Piazzetta
Portrait of Giacomo in a Fur Hat
Oil on canvas

To: Oklahoma City Museum of Art
Purpose: **The Allure of La Serenissima: Eighteenth-Century Venetian Art**
August 1, 2010 – February 15, 2011

Alexandre Hogue
Avalanche by Wind
Oil on canvas

To: Art Museum of South Texas (1/14-4/3/11); Grace Museum, Abilene (5/5-8/20/11); Fort Worth Museum of Science & History (9/16-11/30/11)
Purpose: **Alexandre Hogue: An American Visionary**

Francisco Zúñiga
Joven Reclinada (Young Woman Reposing)
Bronze

Anonymous
Mayan Maize God
Plaster

Alfredo Ramos Martinez
La India De La Pueblita
Oil

Jose Clemente Orozco
La retaguardia (Rear Guard)
Lithograph

David Alfaro Siqueiros
Zapata
Lithograph

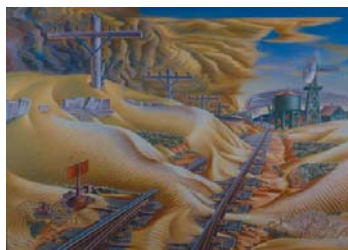
Leopoldo Mendez
Fusilamiento (Firing Squad)
Linocut on paper

Diego Rivera
Zapata
Lithograph

To: Arizona State Museum
Purpose: **Many Mexicos**
11/19/2010 – 11/17/2012



Siqueiros, *Zapata*



Hogue, *Avalanche by Wind*



Piazzetta, *Portrait of Giacomo in a Fur Hat*

Rights and Reproductions of UAMA Artworks in Publication

Fiscal Year 2010 – 2011

Requestor

Molly Hardy

Request

O’Keeffe “*Red Canna*” for book, Sister Arts: Lesbian Genres and the Eighteenth-Century Landscape

Oklahoma City Museum of Art

Piazzetta “*Portrait of Giacomo...*” for exhibition catalogue, *La Serenissima: Eighteenth-century Venetian Art from North American Collections*

Bone Creek Museum of Agrarian Art

Nichols “*Fire in the Barn*” for exhibition catalogue, *Dale Nichols: Transcending Regionalism*

Cynthia Robinson

15 paintings from the Retablo of Ciudad Rodrigo for her book, Imag(in)ing Passions: Christ, the Virgin, Images and Devotion in a Multi-Confessional Castile

Clive Walkley

Bartolomé “*The Last Supper*” for his book, Juan Esquivel: A Master of Sacred Music During the Spanish Golden Age

James M. Dennis

Gottlieb “*Their Only Roof*” for his book, The Strike: Robert Koehler’s Breakthrough Painting of Worker Protest

Addison Gallery of American Art

Davis “*Adit #1*” and Gorky “*Organization*” for book, The Four Musketeers of American Modernism: Graham, Davis, Gorky and de Kooning

Ringling Museum of Art

Brown, “*divine selektah...*” for exhibition catalogue, *Beyond Bling: Voices of Hip-Hop in Art*

Cengage Learning

Flack, “*Marilyn (Vanitas)*” for textbook and e-book, Western Civilization 4 letter Press Student Edition

teNeus Publishing

Hopper, “*The City*” for 2012 Hopper Engagement Calendar

Pamela A. Patton

Bartolomé “*Christ Among the Doctors*” for her book, Art of Estrangement: Redefining Jews in Reconquest Spain

Roland Smithies

O’Keeffe “*Red Canna*” for book, Great Paintings

Ernst Klett Verlag GMBH

O’Keeffe “*Red Canna*” for textbook, Thema Kunst II: Stilleben

Laurence King Publishing

O’Keeffe “*Red Canna*” for textbook, Art: A Brief History (5th edition)

Stella Hockenhull

Rothko “*Green on Blue*” for textbook, The Legacies of Romanticism: Literature, Aesthetics, Landscape

Chameleon Books

Hopper, “*The City*” for book, Edward Hopper’s New York

Leya Escolar (Brazil)

Hopper, “*The City*” for textbook, Aventura do Saber, Geografia I

UAMA & AVA in the News: Publicity 2010 – 2011

Marketing of UAMA was a team effort. On a 'curator to professor' basis, Lauren Rabb and Carol Petrozzello contacted UAMA professors across discipline lines to notify them of exhibitions and programming and invite the participation of their classes. Multiple interns contacted media about exhibitions they were curating or doing research for. In addition, Christine Aguilar posted countless calendar listings and Diane Hartman updated media with press releases and strategically placed paid advertisements. Thanks to the efforts of Iris Budinoff UAMA joined Facebook. Iris and Jay Stephens led UAMA into the world of video, posting UAMA generated videos on YouTube. The net result of everyone's efforts was UAMA was in the news - a lot, generating 70 hits from magazine and newspaper articles, printed pictures, paid advertisements to web media outlets and blogs.

Magazine Articles

Take a Walk on the Cultured Side "Public Art Tour gives insight to sculptures and other exhibits on campus" by Miliani Hunt, **UA Visitor Guide Fall/Winter 2010**, 8/15/2010
Extensive article on "Public Art Walking Tour" with Campus map labeled with location of public art on campus and six pictures.

Unraveling the Secrets of Art by Dolly Spalding, **Zócalo Tucson**, 1/3/2011
Article on Aesthetic Code

Arizona Museums by Scott Andrews, **Art Ltd.**, 1/5/2011
Article (p 66 - 70) on museums in AZ includes info on UAMA (page 70)

More Fun Facts about The University of Arizona by Tucson Lifestyle Home & Garden
Tucson Lifestyle Home & Garden, 10/1/2010
Fun fact about UAMA's Retablo

More Fun Facts about The University of Arizona by Tucson Lifestyle Home & Garden
125th Commemorative Homecoming Magazine, 10/1/2010
Fun fact for 125th Commemorative Homecoming Magazine about Retablo

Guitar at UA Museum of Art by Mike Chesnick, **UA Visitor Guide**, 1/25/2011
About weekly guitar recitals at UAMA

Desert Treasure: Jacques Lipchitz at the University of Arizona Museum of Art by Lisa Fischman, **The Tretyakov Gallery Magazine, Special Issue - USA - Russia: On the CrossRoads of Cultures**, 1/15/2011
Reprint of 2006 Article in same publication - new special issue

Arthur Diehl's Dynamism by Dolly Spalding, **Zócalo**, 6/1/2011
Page 21. Article on UAMA Exhibition: Arthur Diehl: "Friends I Greet You" with picture of "Going Down" from exhibition

Guitar at UA Museum of Art by UA, **UA Visitor Guide**, 5/1/2011
Article on weekly Friday guitar concerts in Kress 1 (Retablo) Gallery - by School of Music guitar students

Viva el Vidrio: Tucson Glass Festival by Sonoran Glass, **Tucson Home**, 2/1/2011
Include mention and ad for Ana Thiel exhibition

Viva el Vidrio: Tucson Glass Festival by Sonoran Glass, **Tucson Glass Festival Booklet**,
4/8/2011
Reprint of insert in Tucson Home. Feature ad and info about Ana Thiel

Newspaper Articles

From Ads to High Art by Adam Lehrer, **Tucson Weekly**, 7/8/2010
City Week "Pick of the Week" article with picture - "Floating Worlds: Japanese Prints
Exhibition Utagama Kunisada "(Actors at) The 53 Stations of The tokaido: #43 Kuwana," 1852

Floating Worlds'Amaze by Steven Kwan, Photography by Emily Moore, **Arizona Summer
Wildcat**, 7/21/2010
Article with with Docent Tammy Bearden on Exhibition: "Pictures of The Floating World: Life in
19th Century Japan" w/subheading: "UA exhibit shows off Japanese artform with renowned
artists"

Nature of Modernity: the great 1927 film 'Metropolis' inspires UAMA's latest exhibition
by Margaret Regan, **Tucson Weekly**, 7/29/2010
Photo of: Fernand Leger's "Les Constructeurs", cropped, 1950 (Gift of Gallagher)

***LECTURES: Special Effects Master "Douglas Trumbull: A History of Special Effects in
Film,"*** by Tucson Weekly staff, **Tucson Weekly**, 9/16/2010
"City Week" Section Lecture selected as pick of week.

A 'hole' new world at UAMA: Street artist to bring talent, optical illusions to Tucson by
Miranda Butler, **Arizona Daily Wildcat**, 11/10/2010
Article on Melanie Stimmel coming to UAMA to create street art as part of The Aesthetic Code

***A 'hole' weekend: Street artist Melanie Stimmell paints the UAMA's floor Friday through
Sunday*** by Steven Kwan, **Arizona Daily Wildcat**, 11/17/2010
Reprise of Melanie's visit and promotion of "Aesthetic Code"

Best Bet: See great art, help hungry at museum by Valerie Vinyard, **Arizona Daily Star**,
12/4/2010
UA 4 Food; Food 4 Art

From Ads to High Art by Adam Lehrer, **Tucson Weekly**, 7/8/2010
Article on Exhibition - Pictures of the Floating World: Life in 19th Century Japan

"Secrets of the Divine" PBS show on UA Museum of Art medieval altarpiece
by Carolyn Classen, **TucsonCitizen.com**, 11/17/2010
Article on premier of hour long video on Retablo

Divergent exhibitions at U of A Museum of Art by Ellen Sussman,
Green Valley News & Sun, 12/15/2010
Article on Museum, especially "Aesthetic Code"

Her Work Explores origins of iconic UA art by Phil Villarreal, **AZ Star / Caliente**, 11/18/2010
Article about Sooyeon Lee Johnston and "Secrets of the Divine."

Investigate your world by Valerie Vinyard, **Arizona Daily Star**, 9/24/2010
Museum Day at UAMA page C4

PostSecret exhibit reveals confessions on life, death and God by Miranda Butler, **Arizona Daily Wildcat**, 10/20/2010
Article on exhibiton "PostSecret"

Campus oddities part of art museum collection by Miranda Butler, **Arizona Daily Wildcat**, 1/13/2011
Article on public art

Tucson Oddity: Tweezer-like art piece at UA picks up its fans over years by Alex Dalenberg, **Arizona Daily Star**, 1/17/2011
About public art and Athena Tacha piece

UA sophomore gets hands-on with curatorial debut by Miranda Butler, **Arizona Daily Wildcat**, 1/19/2011
About Max Klinger: "The Glove" exhibition and student curator

Tricks of the Trade: Art concepts are demonstrated and exhibited at UAMA's "The Aesthetic Code," by Margaret Regan, **Tucson Weekly**, 1/27/2011
Review of exhibiton - Aesthetic Code

Fresh Paint exhibit, auction to benefit UA Museum of Art by Loni Nannini, **Arizona Daily Star**, 2/13/2011
Focus on Fresh Paint fundraiser and artists who contribute work to auction.

Renowned glass artist Thiel at UA today to discuss her work by Kathleen Allen, **Arizona Daily Star**, 2/18/2011
The Arts section page C5

Glass Everywhere! by Margaret Regan, **Tucson Weekly**, 4/7/2011
Mention Ana Thiel Talk

Behind the Iron Curtain by Margaret Regan, **Tucson Weekly**, 6/9/2011
Includes info on Nottebohm exhibition

Paid Advertisements

KUAT Radio Spots

Year-long 15 sec. support announcements about UAMA exhibitions and programming
200 spots over the course of the year

"Things to do at the U!" by Metropolitan Tucson Convention & Visitor's Bureau
"Vist Tucson" Tucson Official Destination Guide" Fall/Winter 2010, 8/1/2010
Pg 53 - half page ad with picture of "Vernet's Infant Son and His Nurse" AD paid for by UA Media

Things to do at the U ! by UA Media

Tucson Lifestyle "2010-2011 Newcomers Edition", 8/1/2010

Pg 54 - half page ad with picture of Vernet's "Infant Son and His Nurse" Ad paid for by UA Media

SAAA Passport advertisement by Southern Arizona Attractions Alliance,

94.9 MIXFM, 10/8/2010

Advertise SAAA Passport book, UAMA specifically mentioned in ad

Congratulations UA on 125 Anniversary by UAMA,

Tucson Lifestyle Home & Garden, 11/1/2010

Paid advertisement for Tucson Lifestyle

Congratulations UA on 125 anniversary by UAMA

125th Commemorative Homecoming Magazine, 11/1/2010

Paid ad for UA 125th commemorative issue

UAMA - Ana Thiel exhibition ad by UAMA, **Tucson Home**, 2/15/2011

Paid advertisement for exhibition in Glass Festival section

Secrets of the Divine National Broadcast Ad by Arizona Public Media, **DesertLeaf**, 4/1/2011

AZPM paid for (did not credit UAMA)

Color ad matched with changing black and white ad by UAMA

On Stage / On Media, 9/1/2010

4 editions of black and white ad featuring exhibitions and including Fresh Paint ad

TV & Radio

Melanie Stimmell - Live by Chuck George - KOLD TV, **KOLD – TV News, Channel 13**,

11/12/2010 Street artist Melanie Stimmell

Chuck George Live at 5 and 6 pm as part of "The Aesthetic Code"/ Stimmell weekend

Melanie Stimmell creates hole in UAMA floor by FOX – TV, **FOX TV News, Channel 11**,

11/12/2010

News broadcast at 9 pm as part of "The Aesthetic Code" / Stimmell weekend

Melanie Stimmel creating street painting on UAMA floor by KVOA Channel 4,

TV News KVOA channel 4, 11/13/2010

Melanie on News at 5:30 and 10 pm as part of "The Aesthetic Code" / Stimmell weekend

Return visit to see Melanie Stimmell's progress by FOX - TV Channel 11

TV - FOX Channel 11, 11/15/2010

Fox TV returned to see Melanie's progress as part of "The Aesthetic Code" / Stimmell weekend

Video Postcard about Melanie Stimmell by PBS HD Channel 6 Arizona Public Media

PBS HD Channel 6 Arizona Public Media, 11/19/2010

Montage of footage from Friday - Sunday 11/12 - 11/14

People Who Make a Difference - UAMA docent Ed Warner by KVOA – TV, Channel 4

KVOA, 8/21/2010

Interview UAMA docent Ed Warner

Weekend Round Up - Fresh Paint by KGUN, Channel 9
KGUN TV, 2/26/2011
Mention "Fresh Paint" as happening

Good Morning, Tucson - Fresh Paint by KGUN, Channel 9
KGUN TV, 2/26/2011
Mention "Fresh Paint" as weekend activity

Published Picture of Art from UAMA Collection

Secrets of the Divine: The Altarpiece of Ciudad Rodrigo - about the program and link to view on internet by AZ Public Media staff, **AZ Public Media**, 4/27/2011
<http://originals.azpm/secrets/>

Museums: UA Museum of Art Listing and picture of "Marilyn" by UA Visitor Guide staff
UA Visitor Guide, 1/25/2011
Listing with exhibitions / UAMA Picture

Now Showing - The University of Arizona Museum of Art by Tucson Guide staff,
Tucson Guide, 3/5/2011
Picture for Ana Thiel exhibition

Inspiring Curiosity by UA Marketing, **Bold Moves Promotional Magazine**, 3/15/2011
Image of O'Keeffe "Red Canna"

Picture; Vasarely to promote The Aesthetic Code by Showup.com, **Zócalo**, 1/5/2011
Full color picture of Hommage a l'Hexagone

Now Showing - UAMA picture of Andreas Nottebohm, KN-1635 by Tucson Guide
Tucson Guide, 6/15/2011
Nottebohm image in Now Showing

Web News

Exhibit Focuses on the Art of Metropolis by Will Holst, **UA News Web**, 9/7/2010
Video Interview with Lauren Rabb, UAMA Curator in conjunction with "Metropolis" exhibition.

Friend of the Show Updates - Douglas Trumbull Lecture by The Fred and Jeff Show
The Fred and Jeff Show, 9/7/2010
Email sent by Radio Show to all "Fred and Jeff" subscribers publicizing the "History of Special Effects in Film and Beyond" Douglas Trumbull Lecture in conjunction with "Metropolis" exhibition

Live feed of Melanie Stimmell's 3 days of creating art on UAMA floor by UAMA / Melanie Stimmell, **Internet live feed via UAMA website**, 11/12/2010
Live while artist worked

UA 4 Food by UA 4 Food staff, **UA webpage**, 12/22/2010
Website included UAMA picture of food donations

UAMA & AVA Annual Report FY 2010 - 2011

Community Asked to Join Territorial Cup Food Fight Championship by Rebecca Ruiz-McGill, UA News, UA News website, 11/30/2010
Art 4 Food is included in article

Campus Keeps Busy During Winter Closure by Rebecca Ruiz-McGill, UA News, UA News, 12/23/2010
UAMA new exhibitions are included in article

University of Arizona Museum of Art - Exhibitions
by Scottsdale Museum of Contemporary Art - Hearsight Magazine
Scottsdale Museum of Contemporary Art - Hearsight, 12/16/2010
Internet listing of various museum including UAMA

Free Weekend admission to UA Museum of Art with donation of two cans of food
by Community Food Bank Blog, on web at **Community Food Bank Blog**, 12/3/2010
Art 4 Food

3-D Artwork in Action by UA News staff, UA News, 11/18/2010
Article on Stimmell and “Aesthetic Code”

International Window: Ana Thiel: Layers of Being by Shane Fero,
GAS News: Glass Art Society's Online Newsletter, 4/8/2011
Page 14 & 15 - about Ana Thiel exhibition

You Tube Videos

Exhibit shows Art at its Most Elemental by UA News, uploaded Jan. 10, 2011
Video on “The Aesthetic Code” exhibition.

Melanie Stimmell at the UAMA – “Cream and Crumpets” by UAMA, uploaded April 18, 2011
Time lapse photography of Melanie Stimmell creating street painting called “Cream and Crumpets”

What is the Best Part of Being a Docent? by UAMA, uploaded May 4, 2011
Docents sound off about being a docent at April Docent Luncheon.

Ana Thiel, by UAMA, Uploaded May 25, 2011
Video of Ana Thiel exhibition with background music

UAMA safety with Wilbur Wildcat, by UAMA, uploaded June 27, 2011
Preview of rules and best practice for school groups.



Dr. Leslie Tolbert and Dr. Paul St. John



Charles A. Guerin

UAMA Information Technology Statistics Fiscal Year 2010- 2011

After the loss of IT position through downsizing, the UAMA website is now coded and developed using Dreamweaver. The general structure of the site was converted under the guidance of Cynthia Barlow, Fine Arts IT manager and student webmaster Jay Stephens. The design of the site will continue to be updated over the summer.

The UAMA website has become one of UAMA's major forms of communication. UAMA continues to develop new webpages for each exhibition and program throughout the year. All general inquiries are directed at the website. The degree of UAMA dependence on the website was evident this spring when the site was frozen in time while it was transferred from a corrupted server to its new server. Having an unchanged site for 5 weeks was stifling. The site is and must be updated regularly to be effective.

UAMA joined the ranks of Facebook users in 2010 – 2011 thanks to intern Iris Budinoff. Iris developed and maintained the Facebook page for the fiscal year. The challenge - going into the future - is maintaining the page and using its unique features to promote UAMA and engage our supporters.

UAMA has become reliant on Constant Contact email marketing for communication. Emails have replaced newsletters and most snail mail communication. Effort to increase UAMA's email list by collecting names at the Tucson Book Festival and on Museum Day increased the list by 300 names. Developing and retaining email recipients is an on-going challenge as well as the efficient integration of the website, Facebook page and Constant Contact efforts.

Website Statistics:

- a. Page views: For the reporting period calendar year 2010 we hosted:
 - Approximately **73,168 unique visitors** including
 - 66,238 first time visitors
 - 6,930 returning visitors

In comparison to the website activity for the comparable reporting period
Calendar year 2009:

- Approximately 57,444 unique visitors including
 - 52,073 first time visitors
 - 5,371 returning visitors

We have experienced a substantial percentage increase in visits to our website:

27% increase in unique visitors
27% increase in first time visitors
29% increase in returning visitors



**UAMA Consolidated Financial Summary Report
for period ending 06/30/11**

Revenues

Budget Loads from State and UA	\$	457,269	39%
Endowment Income		282,627	24%
Gift Revenue	5	72,637	6%
Grant Income		1,000	0%
Memberships (deductible portion)	6	44,580	4%
Sales, Services, and other revenues	6	112,513	10%
Transfers-In from other UA and/or UAF accounts	2	206,842	18%
Total Revenues		\$ 1,177,468	100%

Expenditures

Personal Services (payroll)	\$	687,550	58%
Other Operating Expenditures		220,109	19%
Transfers-Out to other UA and/or UAF accounts	2	206,842	18%
Total Operating Expenditures		\$ 1,114,501	95%
Art Objects (Acquisitions \$138,150); (Public Art restorations and awards \$9,272)		147,422	13%
Capital Improvements to collections storage and archive facility		352,730	30%
Total Expenditures		\$ 1,614,653	137%

Revenues less Expenditures **\$ (437,185)** **-37%**

Beginning fund balances as of 7/1/10 1a **1,325,217**

Ending fund balances as of 06/30/11 1b **\$ 888,032**

Less commitments for 11-12 salary/ERE, AVA renovations, & other commitments 4 **(54,018)**

Less Other Encumbrances and/or Restrictions 3 **(2,500)**

Available fund balance as of 06/30/11 1 **\$ 831,514**

* This is a consolidated statement which includes revenues to and expenses from accounts held by both The University of Arizona AND The University of Arizona Foundation.

1a Beginning fund balance includes UAMA Store inventory of \$13,073.90

1b Ending fund balance includes UAMA Store inventory of \$11,290.81

2 Funds totaling \$206,84 were transferred from various UA Foundation accounts to UA accounts include \$111,082 to support salaries, wages, and employment related expenses, \$65,760 to support various program and operational expenses, \$21,000 for AVA renovation, and \$1,000 to support student scholarship; and \$8,000 was transferred between UA accounts

3 At end of year, remaining encumbrances include only \$2,500 for Mary Case

4 Departmental commitments include \$28,448 for FY 11-12 salary/ERE commitments, \$20,570 for 6th Street AVA alarm, telecom and data line installations, and \$5,000 for Andreas Nottebahr catalog

5 This does not include the \$70,000 gift/pledge payment into the principal corpus of the AVA endowment, which is not treated as operating revenue.

6 This figure only represents the gift portion of memberships; some memberships include non-gift portions, which in the aggregate total \$1,355 which is included in the other revenues portion.

**UAMA CONSOLIDATED FINANCIAL SUMMARY REPORT BY ACCOUNT
FOR PERIOD ENDING 06/22/11**

		+	+	+	+	-	-	=	+	=	-	-	=
		BUDGET LOADS	GIFT/ ENDOW REVENUE	SALES, SERVICE & OTHER REVENUE	TRNSFRS IN	TRNSFRS OUT	EXPENSES	NET ACTIVITY	BEGINNING FUND BALANCE	ENDING FUND BALANCE	DEPT CMMT	ENCMBRD/ RSTRCTD	AVAILABLE BALANCE
SUMMARY BY ACCOUNT													
UNIVERSITY OF ARIZONA ACCOUNT ACTIVITY													
State and UA Budgeted Accounts													
114560	UAMA State	388,974	-	-	-	-	389,933	(959)	3,534	2,575	-	-	2,575
210468	UAMA Personnel Development Fund	42,248	-	-	-	-	42,978	(730)	29,538	28,809	28,448	-	361
211003	Indirect: Public Service/Instruction	22,792	-	-	-	-	22,524	268	19	287	-	-	287
211524	Indirect: PA Maintenance	553	-	-	-	-	2,160	(1,607)	10,595	8,988	-	-	8,988
State/UA Budgeted Account Totals		454,567	-	-	-	-	457,594	(3,027)	43,686	40,659	28,448	-	12,211
Retail and Misc Sales and Service Accounts													
176130	UAMA Store	-	-	11,998	2,000	5,000	10,751	(1,753)	16,651	14,898	-	-	14,898
228530	Misc Sales & Service; Unrestricted endowmnt	-	17,151	30,912	5,000	2,000	61,415	(10,351)	71,703	61,351	(0)	-	61,351
Retail & Misc. Sales & Service Account Totals		-	17,151	42,910	7,000	7,000	72,166	(12,104)	88,353	76,249	(0)	-	76,249
Grant Accounts													
421070	Assn of Art Museum Curators Conference	1,000	-	-	-	-	1,000	-	-	-	-	-	-
425950	Kress Retablo Documentary	-	-	-	-	-	5,000	(5,000)	5,000	-	-	-	-
Grant Account Totals		1,000	-	-	-	-	6,000	(5,000)	5,000	-	-	-	-
UA Gift Accounts													
505370	Kathryn Jessup Scholarship Fund	-	-	-	1,000	-	500	500	19	519	-	-	519
551590	Gallagher (UAMA Collections driven)	-	129,904	-	-	-	596,733	(466,829)	599,289	132,460	-	-	132,460
554060	UAMA Exhibition Fund	-	5,030	-	70,500	-	69,143	6,387	2,574	8,960	5,000	-	3,960
554460	UAMA Membership Programs	-	100	-	61,342	-	63,899	(2,457)	3,671	1,214	-	-	1,214
554530	UAMA Glickman Outreach Programs	902	3,000	-	3,000	-	4,852	2,050	902	2,952	-	-	2,952
555160	UAMA Building fund	-	-	-	-	-	-	-	14,875	14,875	-	-	14,875
557680	UAMA Archive of Visual Arts	-	25,000	-	41,000	-	43,396	22,604	2,678	25,282	20,570	-	4,711
568530	UA (Restricted) Gift	-	8,320	-	23,000	-	28,731	2,589	2,637	5,226	-	2,500	2,726
UA Gift Account Totals		902	171,353	-	199,842	-	807,253	(435,156)	626,644	191,488	25,570	2,500	163,418
UA Plant Funds													
840800	Public Art Pool Totals	-	-	-	-	-	13,955	(13,955)	170,389	156,435	-	-	156,435
TOTAL UA ACCOUNT ACTIVITY		456,469	188,505	42,910	206,842	7,000	1,356,968	(469,242)	934,073	464,831	54,018	2,500	408,313

**UAMA CONSOLIDATED FINANCIAL SUMMARY REPORT BY ACCOUNT
FOR PERIOD ENDING 06/22/11**

	+	+	+	+	-	-	=	+	=	-	-	=
	BUDGET LOADS	GIFT/ ENDOW REVENUE	SALES, SERVICE & OTHER REVENUE	TRNSFRS IN	TRNSFRS OUT	EXPENSES	NET ACTIVITY	BEGINNING FUND BALANCE	ENDING FUND BALANCE	DEPT CMMT	ENCMBRD/ RSTRCTD	AVAILABLE BALANCE
UNIVERSITY OF ARIZONA FOUNDATION ACCOUNT ACTIVITY												
UAF Gift Accounts												
11010.0716	-	11,560	440	-	9,000	-	3,000	46,749	49,749	-	-	49,749
11010.0719	1,800	58,350	68,873	-	77,242	31,370	20,410	-	20,410	-	-	20,410
11010.0722	-	1,388	-	-	1,500	25	(137)	33,626	33,489	-	-	33,489
11010.0731	-	-	-	-	-	460	(460)	44,660	44,200	-	-	44,200
11010.1270	-	73,432	-	-	65,000	5,890	2,542	97,041	99,584	-	-	99,584
11010.1294	-	-	-	-	-	-	-	35,102	35,102	-	-	35,102
11010.1593	-	1,875	-	-	1,500	56	319	347	666	-	-	666
11010.1594	-	1,100	10	-	-	105	1,005	97	1,102	-	-	1,102
11010.1595	-	1,495	280	-	600	1,056	119	15,956	16,075	-	-	16,075
UAF Gift Account Totals	1,800	149,200	69,603	-	154,842	38,961	26,799	273,578	300,377	-	-	300,377
UAF Expendable Endowment Accounts												
11012.0056	-	481	-	-	-	-	481	170	651	-	-	650.73
11012.0135	-	8,244	-	-	-	9,553	(1,309)	22,748	21,439	-	-	21,438.53
11012.0252	-	1,181	-	-	-	1,123	58	4,303	4,361	-	-	4,361.20
11012.4233	-	3,420	-	-	3,000	-	420	3,622	4,042	-	-	4,042.36
11012.4258	-	696	-	-	-	-	696	1,803	2,499	-	-	2,499.04
11012.4271	-	46,127	-	-	41,000	105	5,022	77,682	82,704	-	-	82,704.27
11013.6078	-	1,082	-	-	-	1,100	(18)	5,528	5,511	-	-	5,510.54
11013.6103	-	908	-	-	1,000	-	(92)	1,710	1,617	-	-	1,617.38
UAF Expendable Endowment Account Totals	-	62,140	-	-	45,000	11,882	5,258	117,566	122,824	-	-	122,824
TOTAL UA FOUNDATION ACCOUNT ACTIVITY	1,800	211,339	69,603	-	199,842	50,843	32,057	391,144	423,201	-	-	423,201
TOTAL UAMA ACTIVITY	458,269	399,844	112,513	206,842	206,842	1,407,811	(437,185)	1,325,217	888,032	54,018	2,500	831,514

UAMA PERSONAL SERVICES ACTIVITY THROUGH PAY PERIOD ENDING 06/30/11

ACCT NO.		FUND BALANCE FORWARD	BUDGET LOADS	TRNSFRS IN	WAGES/ERE COMMITMNT	STAFF SALARIES/ERE ENCUMBRANCES	EXPENSES	%
114560	UAMA State	31	383,785	-	-	-	381,256	55%
176130	UAMA Store	-	-		-	-	2,498	0%
210468	UAMA Personnel Development Fund	29,538	42,248	-	28,448	-	42,978	6%
211003	Indirect: Public Service/Instruction	38	22,660	-	-	-	22,390	3%
211524	Indirect: PA Maintenance	-	-	-	-	-	-	0%
228530	Misc Sales/Svc; Unrestrctd endwmnt	-	-		-	-	50,561	7%
421070	Assn of Art Museum Curators Travel	-	-	-	-	-	-	0%
425950	Kress Retablo Documentary	-	-		-	-	-	0%
505370	Kathryn Jessup Scholarship Fund	-	-		-	-	-	0%
551590	Gallagher (UAMA Collections driven)	-	-		-	-	82,197	12%
554060	UAMA Exhibition Fund	-	-	39,863	-	-	29,554	4%
554460	UAMA Membership Programs	-	-	39,085	-	-	39,132	6%
554530	UAMA Glickman Outreach Programs	-	902	3,000	-	-	3,221	0%
555160	UAMA Building fund	-	-	-	-	-	-	0%
557680	UAMA Archive of Visual Arts	-	-	14,700	-	-	14,633	2%
568530	UA (Restricted) Gift	-	-	14,434	-	-	14,447	2%
840800	Public Art Acquisitions/costs	-	-		-	-	4,683	1%
Total Activity		29,607	449,594	111,082	28,448	-	687,550	100%

All salaries, wages, and employment related expenses paid through UA gift accounts starting with 554060, 554460, 554530, and 557680 are supported by various gift funds held by the University of Arizona Foundation, roughly equal to 15% of our total payroll expenditures.

UAMA ENDOWMENT FAIR MARKET VALUES AS OF 06/30/11**

ACCT #	PRINCIPAL ENDOWMENT ACCOUNTS	06/30/10 FMV	6/30/11 FMV * FMV	YEAR- END FMV CHANGE	% CHANGE	FY 09-10 INCOME	FY 10-11 INCOME	INCOME CHANGE	% CHANGE
072169	Gallagher Foundation Endowment	5,099,973	6,029,177	929,204	18%	125,460	122,596	(2,863)	-2%
073044	Gallagher Memorial Endowment	158,575	173,947	15,372	10%	7,895	7,307	(588)	-7%
074029	UAMA Security Endowment	372,204	408,286	36,082	10%	18,531	17,151	(1,380)	-7%
02-11010.1270	Hanson Foundation Endowment	1,519,055	1,776,900	257,845	17%	71,053	73,432	2,379	3%
04-11010.0056	Sean Bailey UAMA Library Endowment	10,784	12,117	1,333	12%	507	481	(26)	-5%
04-11010.0135	UAMA Operations Endowment	184,731	207,562	22,831	12%	8,721	8,244	(477)	-5%
04-11010.0252	Birmingham Exhibit Endowment	26,644	29,937	3,293	12%	1,188	1,181	(6)	-1%
04-11010.4233	Glickman UAMA Outreach Endowment	76,640	86,112	9,472	12%	3,618	3,420	(198)	-5%
04-11010.4258	Slowik Curatorial Internship Endowment	15,597	17,525	1,928	12%	736	696	(40)	-5%
04-11010.4271	UAMA - AVA Endowment	1,006,964	1,198,586	191,622	19%	44,608	46,127	1,519	3%
04-11011.6078	Internship Endowment	24,255	27,252	2,998	12%	1,140	1,082	(58)	-5%
04-11011.6103	Jessup Scholarship Endowment	20,398	22,919	2,521	12%	915	908	(7)	-1%
ENDOWMENT TOTALS		8,515,821	9,990,320	1,474,499	17%	284,372	282,627	(1,745)	-1%

The Gallagher Foundation and Hanson Foundation Endowments pay out income based upon current market values. All other endowments pay out income based upon 4% of a 3-year rolling average of fair market values.

** the FMV (Fair Market Value) shown for those endowments whose account number starts in 04 is the FMV as of 5/31/11; all others are for 6/30/11

UAMA PARTNERS'
FY 10-11 CONSOLIDATED INCOME STATEMENT
FOR PERIOD ENDING 06/30/11

Revenues

Donations		\$ -
FY 10-11 Memberships		
1 Benefactors @ \$2,500 each	2,500	
12 Honorary Fellows @ \$1,000 ea	12,000	³
15 Donors @ \$500 each	7,500	
25 Sponsors @ \$250	6,250	
48 Families	8,400	
55 Individuals	6,870	
1 Junior Partner	50	
157 Total memberships to date *		43,570 ^F

Special Fund Raising Events (net revenues)

2011 Fresh Paint - net to date see attached	39,535	
Melanie Stimmel reception/soiree on 11/12/10 (net)	(52)	
Susan Gamble Art Studio Tour on 12/8/10 (net)	576	
Tom Philbaum Studio Tour on 01/12/11 (net)	677	
Dallas Art tour 3/21/11-3/24/11 (net to date, see attached)	8,630	
Rancho Linda Vista tour on 3/9/11 (net to date, see attached)	959	
Foothills Art & Architecture tour on 4/13/11 (net to date, see attached)	1,539	
Maxfield Art Collection viewing on 5/4/11 (net to date, see attached)	427	
Total Net Revenues from fund raising events		52,290

Total Revenues

\$ 95,860 ^F

Expenses

General operating/administrative costs		
Board meeting lunches (revenues collected less expenses)	\$ 173	
Credit card processing/bank fees	465	
Development Fees equal to 6% on aggregate gifts > \$5,000	150	⁴
Membership premiums (SAAA Passport Coupon Books for Honorary Fellows)	124	
Postage	662	
Printing: Event calendars, membership reception invitation, envelopes, directories, stationery, name placards	1,544	
Program supplies: Specialty paper, envelopes, NARM stickers, notebooks, etc	336	
Reception for TMA & UAMA Partners board members on 3/15/11	641	
Membership (high-level) appreciation event on 4/28/11	850	
Membership reception (see attached)	3,498	
Total Operating Expenses		\$ 8,444

Net contributions to date

\$ 87,416 ^F

¹ This may not include revenues which may have been received but not yet deposited.

² This may not include all expenses which may have been incurred, but not yet paid.

³ One membership includes matching funds from a foundation, which has been received

⁴ When donors make aggregate gifts > \$5,000 to be allocated among many UA departments, UAF assesses a 6% development fee on each department's share of the total gift, which in this case was a Benefactor membership of \$2,500

* As of this time last year, we had received only 112 memberships totaling \$26,750!

**UAMA PARTNERS' SPRING 2011 FRESH PAINT EVENT
FY 10-11 CONSOLIDATED INCOME STATEMENT
FOR PERIOD ENDING 06/30/11**

Revenues

Donations

20 Underwriting Support	\$ 11,010		
14 Contributions (unsolicited)	1,055		
Total Donations		\$ 12,065	F

Ticket Sales

174 Comp Artist & framers tickets			
12 Other comp tickets (Desert Leaf, KUAT, Tohono Chul)			
79 Artist's guest tickets @\$30 each	2,380	¹	
327 Full-price tickets @\$60 each	19,620	¹	
Total Ticket Revenues		22,000	F

5 **Workshop by Brian Freeman** **250**

Auction Sales

10 Live Auction proceeds	8,510		
161 Silent Auction proceeds	19,509	^F	
Total Auction proceeds		28,019	F

In-Kind Donations

In-Kind donations from Arizona Public Media (radio ads)	1,000		
In-Kind donation from Desert Leaf (magazine ad)	1,095		
Total In-Kind Donations		2,095	

Total Revenues

\$ 64,429 ^F

Expenses

Advertising - OnStage Programs FY 2010-11	1,000		³
Advertising - Arizona Public Media (donated radio ads)	1,000		
Advertising - Desert Leaf (donated magazine ads)	1,095		
Alcohol & Bartender services (Professional Bartenders, Ltd.)	3,639		
Caterers: Janos \$1500, Pastiche \$200, Redington \$1033, Sauce \$1500, & Vivace \$1200	5,433		
Credit Card & admin processing fees	1,194		
Floral arrangements	656		
Entertainment: Rosewood Marimba Band (UA School of Music)	300		
Parking & golf cart service	612		
Postage - Save-the-Date, Call to Artists, Invites, underwriter packages, notes, artist packets	1,483		
Printing - Save-the-Date & Call to Artists cards, Fact sheets, Artists invites, event registration forms, letters, artist applications, programs, gallery & auction signage	6,050		
Rentals (tables, linens, chairs, tents, fencing, heaters etc from A La Carte Rentals	1,633		
Supplies (folders, envelopes, packets, specialty paper, cardstock, binders, glue stix, pens, pencils, highlighters, glasses, plates, napkins, black material, etc)	1,649		
Workshop honorarium to Brian Freeman	150		
Total Expenses		25,894	40%

Net contribution to UAMA

\$ 38,535 **60%**

Credit for expenses incurred in FY 09-10 1,000

Net contribution for FY 10-11

\$ 39,535 ^F

¹ This may not include all revenues which may have been received, but not yet posted

² This may not include all expenses which may have been incurred, but not yet paid or posted

³ This includes expenses incurred in FY 09-10

^F Final

Monetary Gifts and Grants Fiscal Year 2010 – 2011

This list represents donors whose cumulative tax deductible monetary gifts for fiscal year 2010 – 2011 were greater or equal to \$250.

\$25,000

Ruth E. Reed Miller
(Renovation of AVA building)

\$3000 - \$5500

Betty and Lloyd Schermer
Donald Kendall, Jr.
Jane & Bob Wienke
Beatrice & Samuel Ellis
Estate of Donald Agthe

\$2000 - \$2999

Sandy & Robert Maxfield
Phoebe & John Lewis

\$1000 - \$1999

Susan W. Kornhaber
Sally & Ben Perks
Kathy & Tim Torrington
Marti & Ed Slowik
Shirley & Bud Bray
Jocelyn & James Stoller
Betsy & Bill Bowen
Linda & Jon Ender
Patricia & Robert Huber
Pat Jessup
Margot Lane

\$500 - \$999

Louise & James Glasser
Mary Ann & Bob Stubbs
Count & Countess Ferdinand Von Galen
Jeanne Pickering & Mike Andrews
Barbara & John Churchill
Jaime & Jim Burke
Lucette Barber
Linda & Jim Goggin
Nancy & Walter Miller
Nancy & Edward Strauss
Dede & Bill McKnight
Lee & Arthur Herbst
William Parker & Larry Deutsch
Patricia Carr Morgan & Peter Salomon

\$500 - \$999 (con't.)

Anne & Guy Ferro
Patricia & Robert Johnston
Christina McNearney
Nancy & Kurt Gardner
Susan & Dick Imwalle
Doris & Steve Ratoff
Sally & Anthony Torrance
Rhonda Lustman & Paul Winick
American Association of Museum Directors
Foundation
Marianne & Michael Cracovaner
Patricia and Robert Huber
Lorraine and Adolph Stern

\$350 - \$499

Virginia Rezetko
Jennifer Luyties & Chuck Putney
Sue and J.D. Shulec
Jan & Paul Johns
Pamela Parry
Kathy & Bob Buettner
Frances & Robert Moore
Jane & Warren Tisdale
Connie & Tony Bischof
Dorothy Gruver
Norma & James Slone
Hedi & Glenn Bacon
Molly & Conrad Bradshaw
Lucy & Rick Belding
Shirley & Roland Calhoun
Aphrodite & Herbert Rubin

\$250 - \$349

Anonymous
Katharina Phillips & Sheldon Trubatch
Veronica and Arthur Gonzales
Patricia Doerr
Martha & John Lyons
Ellen Colon
Michael Harper
Marilyn & Bob Joyce
Nancy & Dick Walbert

\$250 - \$349 (con't.)

Debbie and Bill Montgomery
Pat & Briggs Ackert
Laura & Archibald Brown
Sally & Bob Crawford
Margie & John Kerr
Marcia & Bill Patterson
Lois & Robert Simanton

Sherie Brokema & Earl Wettstein
Eugenia Pell
Louise & Jack Gumbin
Northern Trust Bank
Nancy & David Rollins
Patsy & Ron Sable
Tucson Subaru
Volvo of Tucson

Grant Support - \$1000

Association of Art Museum Curators Foundation



Archive of Visual Arts Building (AVA)
Pre-renovation January, 2010



Archive of Visual Arts Building (AVA)
During renovation July, 2011

In Kind Contributions Fiscal Year 2010 – 2011

UAMA acknowledges the in-kind contributions of the following individuals, businesses and organizations:

The Process Museum
Arizona Public Media
Desert Leaf
University of Arizona Repertory Theatre

Fox Restaurant – Sauce
Downtown Kitchen + Cocktails
Pastiche Modern Eatery
Vivace Restaurant

Fresh Paint Artists:

Geri Acosta
Mary Ahls
Jo Andersen
Adelaide Anderson
Kurt Anderson
Joyce Andre
Judith Hinton Andrew
Lynn Anglin
Noé Badillo
Danya Balderrama
Kevin Barbro
Jane Barton
Dee Bates

Bruce Baughman
Joanne Bauman
Lucy Belding
Hugh Beykirch
Wendy Blackwell
Curt Blanchard
Mickey Bond
Troy Boswell
Terry Bowman
Barbara Brandel
Karen Bright
Curt Brill
Young Cage

Grace Calterone
Richard Cardinal
Marianna Carreras
Suzanne M. Chapman
Linda L. Chappel
Antonio Childress
Barbara Conaway
Wayne Crandell
Diane Crenshaw
Julia Crenshaw
Patrick Crenshaw
Stephen Crenshaw
Elizabeth Criger

Hope Cunningham
Christine Dawdy
Christie Delgado
Ernest F. deSoto
Joan Fimbel DiGiovanni
Karen Domnitch
Simon Donovan
Eileen Dudley
Mary Rose Duffield
Patricia Duncan
Jane Eifler
Anne Erdman

Fresh Paint Artists: (con't.)

Betsy Farmer
 Betina Fink
 Lynn Fleischman
 Judy Flynn
 Brian Freeman
 Patricia Ann Friedman
 Valerie Galloway
 Mena Ganey
 Kathryn Gastelum
 Jackie Goldman
 Veronica Gonzales
 Lucas Gonzalez
 Darenthia Grayson
 Candace Greenburg
 Debra Gregerman
 Charles Guerin
 Barbara Gurwitz
 Rowena Hardinger
 Cristina Hasigan
 Carl Heldt
 Jean Gryzlo Hendon
 Casie Herron
 Janine Higgins
 Sheryl Holland
 JoAnne Hungate
 John Jefferies
 Ciri Johnson
 Jane Johnson
 Patricia Katchur
 Pam Kazal

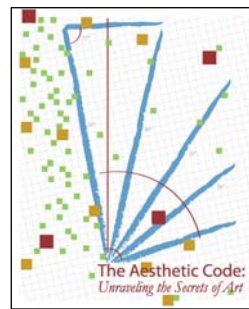
Murray Keshner
 Ros Kroft
 Rebecca Leland
 Mary Lutheran
 Elizabeth Manfredi
 Annie Margarita
 Del Marinello
 Linda Markus
 Lucy Masterman
 Susan Matte-Farina
 M. May
 Emely McConkey
 Theresa McCormick
 Fran McNeely
 Terry Medaris
 Debbie Meyer
 Aaron Miller
 Cynthia Miller
 Larry Miller
 Nancy Tokar Miller
 Lisa E. Mishler
 Paul Mohr
 David Montefiore
 Harriett Morton
 Caralee Mueller
 Barbara Mulleneaux
 Monique Murietta
 Judy Nakari
 Joyce Nelson
 Jean Nerenberg

Mishcka O'Connor
 Rebecca O'Day
 Adrienne O'Hare
 Ora Marlene O'Toole
 Patricia Palmer
 Darcie Peet
 Eugenia Pell
 Edgar Perry
 James Petrozzello
 Sean-Paul Pluguez
 Andrew Polk
 Katheryn Polk
 Samuel Ponce
 Walter Porter
 Nancy Prevo
 Teri Pursch
 Rembrandt Quiballo
 Patricia Redding
 Chris Rightmer
 Kathy Robbins
 Pauline Roche
 Raul Romero
 Andrew Rush
 Vincent Scardino
 Richard Schaffer
 Lloyd Schermer
 Ron Schlorff
 Levi Sherman
 Sue Woodside Shulec
 Dragana Skrepnik

Marti Slowik
 Barbara Smith
 Nancy Solomon
 Carolyn S. Sotelo
 Mano Sotelo
 Sara Spanjers
 Phil Starke
 Rachel Stiff
 Jeff Storey
 Karen M. Strom
 Stephen Strom
 Beth Ames Swartz
 David Thekan
 William E. Thompson
 Cecelia Thorner
 Bob Vint
 Jim Waid
 Risa Waldt
 Ed Warner
 Sunny Warner
 Earl Wettstein
 Michelle Wilmot
 Adam Yeater
 Roy Young
 Micaela Zachmeier
 Angie Zimmerman



Lauren Rabb, Curator



The **Aesthetic Code** catalog
 Printing underwritten by The Process Museum

ARIZONA PUBLIC MEDIA
 KUAT 6 • KUAS 27 • KUAZ 1550 AM/89.1 FM • KUAT 90.5 FM • UA Channel

UAMA Media Partner

Store Stats FY 2010 - 2011

Sales per visitor / monthly

Fiscal Year 10 - 11												
	Sales 09-10	Sales 10-11	Attendance	Sales per visitor	Number of items sold	Average Price per item	Transactions per month	Average per transaction	Sales per square foot - 250 sq ft ¹	Cost of goods sold per month	Gross Profit (Rev - Cost Of goods)	Gross profit as % of revenue
July	\$1,599.15	\$691.80	1346	\$ 0.51	99	\$ 6.99	60	\$ 11.53	\$2.77	\$ 349.95	\$341.85	49.4%
August	\$663.63	\$408.77	711	\$ 0.57	64	\$ 6.39	34	\$ 12.02	\$1.64	\$ 194.88	\$213.89	52.3%
September	\$1,021.21	\$749.89	3012	\$ 0.25	112	\$ 6.70	70	\$ 10.71	\$3.00	\$ 357.59	\$392.30	52.3%
October	\$993.43	\$620.29	2355	\$ 0.26	102	\$ 6.08	65	\$ 9.54	\$2.48	\$ 299.89	\$320.40	51.7%
November ³	\$1,420.66	\$2,308.10	3213	\$ 0.72	306	\$ 7.54	123	\$ 18.77	\$9.23	\$ 1,168.96	\$1,139.14	49.4%
December	\$2,207.82	\$1,387.97	1621	\$ 0.86	184	\$ 7.54	123	\$ 11.28	\$5.55	\$ 654.85	\$733.12	52.8%
January	\$1,347.75	\$1,837.17	1503	\$ 1.22	88	\$ 20.88	187	\$ 9.82	\$7.35	\$ 558.76	\$1,278.41	69.6%
February	\$1,693.97	\$1,321.42	2926	\$ 0.45	150	\$ 8.81	102	\$ 12.96	\$5.29	\$ 581.48	\$739.94	56.0%
March	\$2,740.51	\$1,848.07	2774	\$ 0.67	458	\$ 4.04	118	\$ 15.66	\$7.39	\$ 793.24	\$1,054.83	57.1%
April	\$1,022.53	\$1,411.06	3131	\$ 0.45	117	\$ 12.06	72	\$ 19.60	\$5.64	\$ 570.22	\$840.84	59.6%
May	\$1,029.28	\$576.36	1273	\$ 0.45	50	\$ 11.53	72	\$ 8.01	\$2.31	\$ 294.61	\$281.75	48.9%
June	\$588.79	\$819.87	945	\$ 0.87	117	\$ 7.01	66	\$ 12.42	\$3.28	\$ 547.98	\$271.89	33.2%
Totals FY10-11		\$13,980.77	24,810	0.56	1,847	\$ 7.57	1,092	\$ 12.80	\$55.92	\$6,372.41	\$7,608.36	54.4%

	06-07 Average Sales per month	07- 08 Average Sales per month	08-09 Average Sales per month	09-10 Average Sales per month	10-11 Average Sales per Month	Average attendanc e per month	Average number items sold per month	Average number of trans- actions per month		Average cost of goods sold per month	Average Gross Profit per month
Average per month	\$1,416.11	\$2,239.29	\$ 2,186.22	\$1,360.73	\$1,165.06	2,068	154	91		\$531.03	\$634.03

Historic visitors per square foot

Visitors (06-07) per square foot: 132 visitors per sq ft

Visitors (07-08) per square foot: 144

Visitors (08-09) per square foot: 108

Visitors (09-10) per square foot: 83

Visitors (10 - 11) per square foot: 99

¹ Museum store standard is a minimum 500 square feet for small and medium museums. UAMA is approximately 250 square feet.

Rentals of UAMA Fiscal Year 2010 - 2011

September 2010

9/24/2010 5:00:00 PM 7:00:00 PM

Latin American Reception

UA Latin American Studies

2nd Floor, McCall & Mezzanine

Colin Deets

Attendance 50

December 2010

12/14/2010 1:00:00 PM 4:00:00 PM

Integrative Medicine Holiday Event

Integrative Medicine

1st Floor, Conference Room

Paula Cook

Attendance 25

April 2011

4/1/2011 4:00:00 PM 6:00:00 PM

Arthur Diehl Reception

2nd Floor, Pfeiffer

Genii Pell

Attendance 50

4/19/2011 4:00:00 PM 5:00:00 PM

MFA Defense - Christina Caro

School of Art

1st Floor, Main Gallery

Martina Shenal, School of Art

Attendance 5

4/19/2011 9:00:00 AM 0:00:00 AM

MFA Defense - Corinne Close

School of Art

1st Floor, Main Gallery

Martina Shenal, School of Art

Attendance 5

4/19/2011 3:00:00 PM 4:00:00 PM

MFA Defense - Emma High

School of Art

1st Floor, Main Gallery

Martina Shenal, School of Art

Attendance 5

4/27/2011	2:30:00 PM	1:30:00 PM	
MFA Defense - Jessica Gerlach			
School of Art			1st Floor, Main Gallery
Martina Shenal, School of Art			Attendance 5
4/18/2011	2:30:00 PM	1:30:00 PM	
MFA Defense - Liz Stringfield			
School of Art			1st Floor, Main Gallery
Martina Shenal, School of Art			Attendance 5
4/22/2011	3:30:00 PM	4:30:00 PM	
MFA Defense - Margi Kimball			
School of Art			1st Floor, Main Gallery
Martina Shenal, School of Art			Attendance 5
4/18/2011	9:30:00 AM	0:30:00 AM	
MFA Defense - Sarah Zidonik			
School of Art			1st Floor, Main Gallery
Martina Shenal, School of Art			Attendance 5
<hr/>			
May 2011			
5/1/2011	1:00:00 PM	3:00:00 PM	
Clarinet Choir Concert			
UA Music Dept			1st Floor, Main Gallery
Jerry Kirkbride			Attendance 60
5/5/2011	3:30:00 PM	4:30:00 PM	
MFA Defense - Jessica Gerlach			
School of Art			1st Floor, Main Gallery
Martina Shenal, School of Art			Attendance 5
5/5/2011	3:30:00 PM	4:30:00 PM	
MFA Defense - Sonja Johnson			
School of Art			1st Floor, Main Gallery
Martina Shenal, School of Art			Attendance 5
<hr/>			
Grand Total	Attendance	230	

UAMA Staff, Student Employees, Interns, & Volunteers

UA Museum of Art Staff – Fiscal Year 2010 - 2011

Christine Aguilar
Administrative Secretary

John Kelly
Exhibitions Specialist

Charles Guerin
Executive Director/ Chief Curator

Andrew Leahy
Security Officer

Beth Hancock
Public Art Coordinator

Carol Petrozzello
Curator of Education

Diane Hartman
Director of Resource Initiatives

Lauren Rabb
Curator

Robert Hershoff
Archivist/Systems Support Analyst
(partial year)

Kristen Schmidt
Registrar

Kathleen Kearney
Business Manager

Kris Wagman
Security Supervisor

UAMA Student Employees

Fiscal Year 2010 - 2011

Student employees receive ‘real world’ job experience while at the same time enhancing the capability of the regular staff members. A total of 21 positions were filled over the fiscal year from the roster of 16 names listed below. The students were employed for 7, 683 hours which is equivalent to 3.9 FTE. Positions were held in Administration, Exhibits Design, Graphic Design, IT, and Security. Students with a star after their name were employed at the end of the fiscal year. Students that held more than one position are indicated by a position number after their name.

Danya E. Balderrama *

Lana F. Littleman *

Samantha Bankston * (2)

Ian McKenzie (2)

Lene R. Carroll * (2)

Julia Purdy

James R. Fennewald Jr. *

April M. Putney * (2)

Hunter Gudenkauf *

Michael A. Soto *

Melannie Hurtado *

Jay Stephens *

Kari Imoro * (2)

Jeremy Wilder

Christopher W. Kern *

Aimee Leon



Kari Imoro - Graphics

INTERNS

The UAMA staff have actively partnered with interns this last year. The intern gains real world experience, while the staff person gains a research arm or an organizational adjunct. The experience is a win/win for both UAMA and the students. In addition, the students give UAMA a young perspective on the workings of a museum. UAMA appreciates all the time and effort that the students invested in making the UAMA program a success and recognizes the countless hours the staff invested in supporting and instructing these interns.

Total Intern Hours – 2025 hours / 16 positions / 11 students

Administration Department Interns (150 TOTAL HOURS)

Morgan Breitenstein (Library)	Fall, 2010	150 hours
----------------------------------	------------	-----------

Curatorial Department Interns (435 TOTAL HOURS)

Anna Walcutt	Fall 2010	90 hours
	Spring 2011	60 hours

Emma Kleiner	Fall 2010	135 hours
	Spring 2011	90 hours

Iris Budinoff	Fall 2010	60 hours
---------------	-----------	----------

Education Department Interns (1200 TOTAL HOURS)

Roy Young (Jessup Scholar)	Summer 2010	150 hours
	Fall 2010	150 hours

Carrie Vonier	Fall 2010	150 hours
---------------	-----------	-----------

Shana Ciquemani	Fall 2010	150 hours
-----------------	-----------	-----------

Jamie Martin (Jessup Scholar)	Fall 2010	150 hours
	Spring 2011	150 hours

Iris Budinoff	Fall 2010	150 hours
	Spring 2011	150 hours

Registrar Department Interns (240 TOTAL HOURS)

Ashley Hunter	Fall 2010	120 hours
---------------	-----------	-----------

Nicole Dybel	Spring 2011	120 hours
--------------	-------------	-----------

VOLUNTEERS

UAMA does some of its best work with the support of volunteers. These selfless people assist and support the Museum in a range of different roles. They act as ambassadors to the community, as advisors, as fundraisers, as board and committee members and as tour leaders. UAMA

Department Volunteers

Total Department Volunteer Hours: 491 hours / 8 positions / 7 individuals

Curatorial Department Volunteers (130 TOTAL HOURS)

Jessica Larson (visiting student from University of Michigan in Ann Arbor)	Summer 2010	60 hours
Waverley Chmura	Fall 2010	20 hours
	Spring 2011	20 hours
Denyse Walters (visiting student from Lycoming College in Williamsport, PA)	Summer 2011	30 hours

Registrar Department Volunteers (361 TOTAL HOURS)

Ashley Hunter	Summer 2010	95 hours
Ruth Hatton	Spring 2011	30 hours
Erika Wingfield	Summer 2011	36 hours (ongoing)
Alex Chermside	Spring, 2011	200 hours (ongoing)



Secrets of the Divine Discussion
Charles Guerin, UAMA executive director, Sooyeon Lee Johnston, "Secrets" producer
Dr. Albrecht Classen, UA German professor, and John Gibson, Arizona Public Media director

UAMA National Advisory Council – Fiscal Year 2010 - 2011

Florence Adamson
02/01/2011-06-30/2011

Noe Badillo
02/01/2010-06/30/2011

Jaime Burke

Danya Balderrama
UA Undergraduate Representative

Michael Dominguez

Jan Johns

Bob Joyce

Susan Kornhaber

Jocelyn Stoller

Jane Wienke

Roy Young
UA Graduate Representative
07/01/2010-01/31/2011

Ex Officio

Charles Guerin
Executive Director, UAMA

Diane Hartman
Director of Resource Initiatives, UAMA

Robert Hershoff
Archivist/Systems Support Analyst
07/01/2010-12/30/2010

Carol Petrozzello
Curator of Education, UAMA

Lauren Rabb
Curator, UAMA

UAMA Collections Committee – Fiscal Year 2010 - 2011

(The Gallagher Committee members are also members of the Collections Committee.)

Barbara Churchill
Community Member

Nancy Tokar Miller
Community Member

Jennifer Kirsch
UA Undergraduate Representative

Gallagher Committee –Fiscal Year 2010-2011

Janice Cervelli
Dean, School of Architecture

Charles Guerin
Executive Director, UAMA

McKenzie Massman
Head of Operations, AZ State Museum

Dennis Jones
Director, School of Art

Katherine Martinez
Director, CCP

Paula Wolfe
Arts/Art History University Librarian

Ex-Officio Members

Diane Hartman
Director of Marketing & Resource Initiatives

Lauren Rabb
Curator, UA Museum of Art

Kristen Schmidt
Registrar, UAMA

UAMA Partner Board & Advisors – Fiscal Year 2010-2011

Lucette Barber	Cynthia Hedlund	William Parker
Lucy Belding	Lee Herbst	Pamela Parry
Bill Bowen	Jan Johns	Eugenia Pell
Shirley Bray	Patricia Johnston	Sally Perks
Jaime Burke	Susan Kornhaber	Marti Slowik
Barbara Churchill	Margot Lane	Cecelia Thorner
Margot Denny	Phoebe Lewis	Sally Torrance
Anne Ferro	Linda Markus	Kathryn Torrington
Nancy Gardner	Dede McKnight	Jane Wienke
Joyce Harrington	Sand Maxfield	



Fresh Paint: Jaime Burke, Partners Chair
Bill Parker, Fresh Paint Décor Chair



Wilbur Wildcat with O'keeffe, **Red Canna**
during filming of Tour Best Practices Video



Docent Tammy Bearden with
school group viewing
Zúñiga in Art's Oasis

UAMA DOCENTS 2010 - 2011

Magda Baker	Julianne Hurst-Williams	Sally Peashock
Lucette Barber	Sandi Karpelowitz	Fran Phillips
Tammy Bearden	Nancy Kelleher	Cherie Amour Pittman
Frances Chen	Florence Koch	Carolyn Rivers
Nancy Clancy	Ginger Krudup	Johanna Stein
Rosemary Emery	Margaret Lacey	Lorraine Stern
Donna Engelbert	Joan Lewelling	Fleurette Wallach
Betsy Farmer	Judy Liebman	Marc Wallach
Jacquelyn Feller	Karen Loquvam	Ed Warner
Pamela Gilbert-Wortzel	Norman Miller	Penee White
Frances Griesing	Judy Nakari	Joel Williams
Sally Goodrich	Ken Nakari	Maria D. Williamson
Jana Grove Johnson	Leonora Nixon	Margaret York
Monica Hart	Bella Nymo	
Violet Hover	Patricia Palmer	

UA Public Art Advisory Committee – Fiscal Year 2010-2011

Dennis Jones, Director
UA School of Art

Pete Dourlein, Associate Director,
UA Facilities Design & Construction

Bob Joyce, Visiting Assistant Professor
UA School of Architecture

Charles Guerin, PAAC Chairman
Executive Director
UA Museum of Art & Archive of Visual Arts

Mark Novak
UA Campus & Facilities Planning

Beth Hancock
Public Art Coordinator

Kristen Schmidt, Registrar
UA Museum of Art & Archive of Visual Arts

David Hoyt Johnson, Deputy Director,
Tucson Pima Arts Council

Ron Stoltz, Director,
UA School of Landscape Architecture



UAMA after Dark – Spanish guitarist
Gabriel Navia



PostSecret WildCat Confessions Wall



PostSecret postcard
Courtesy of Frank Warren



Students examining Strozzi's
Madonna of Humility



MFA 2011 reception



Art 4 Food
(holiday food drive)

UAMA Membership Fiscal Year 2010-2011 **As of 06/30/2011**

Support of UAMA through membership has increased with the advent of the Museum charging admission. Each membership makes a difference! The Museum thanks each member for investing in art and culture in Tucson by investing in UAMA.

There are two broad levels of members, Partner and General. Partner level ensures invitations to the social events listed earlier in the report. New this year were Junior Level Partner Memberships. All memberships support the quality and scope of the UAMA exhibitions and programs.

Partners Membership

Benefactor

Beatrice & Samuel Ellis

Partner Honorary Fellow

Bill & Betsy Bowen
Harold & Shirley Bray
Linda & Jon Ender
James J. & Louise Glasser
Pat & Robert Huber
James P. Jessup
Marti & Edward Slowik
Jocelyn & James Stoller
Mary Ann & Robert Stubbs
Kathryn & Timothy Torrington
Ferdinand & Countess Von Galen
Jane & Bob Wienke

Partner Donor

John & Barbara Churchill
Mike &rews & Jeanne Pickering
Anne & Guy Ferro
Kirt & Nancy Gardner
Lee & Arthur Herbst
Susan & Richard Imwalle
Dede & Bill McKnight
Sally & Ben Perks
Jennifer & Chuck Putney
Virginia Rezetko
Doris & Steven Ratoff
Lorranine & Adolph Stern
Nancy & Edward Strauss
Sally & Anthony Torrance
Ronda Lustman & Paul Winick

Partner Sponsor

Briggs & Pat Ackert
Lucy & Richard Belding
Tony & Connie Bischof
Patricia Blomfield
Laura & Arch Brown

Partners Sponsor (con't)

Jaime & James Burke
Larry Deutsch & Bill Parker
Annette & Stanley Glickman
Dorothy Gruver
Jan & Paul Johns
Char & Bill Johnson
Patricia & Robert Johnston
Clayton & Marilyn Joyce
Phoebe & Jack Lewis
Sally & Ernest Micek
Debbie & Bill Montgomery
Pamela Parry
Mary & Robert Paulin
Eugenia Pell
James & Debbie Quirk
Barbara & James Restin
Aphrodite & Herbert Rubin
Patsy & Ron Sable
Dr. Peter Salomon & Patricia Carr Morgan
Susan Scheerer
Norma & James Slone
Lee & William Strang

Partner Couple

Larry & Florence Adamson
Joyce & Michael Andre
Lynn & Albert Andrews
Glenn & Hedi Bacon
Jackie & Gary Bartick
Jill & Grafton Berger
Conrad & Molly Bradshaw
Robert & Kathleen Buettner
Roland & Shirley Calhoun
Loomis & Bill Carleton
Jan & Frank Cicero
Barbara & Bill Dantzler
Mary & Thomas Feldsien
Jacquelyn & Ronald Feller
Theresa & Irwin Freundlich
Sybille & Hellmut Fritzsche

Partners Couple (con't)

Kathy & Michael Gagnon
 Jim & Linda Goggin
 Veronica & Art Gonzales
 Suzanne Werbelow & Joseph Gross
 Jean & Richard Hait
 Millie Heine
 Sandy & Robert Maxfield
 Nancy & Walter Miller
 Kitty & William Moeller
 Frances & Robert Moore
 Betsy & James Morrow
 Judith & Harry Mullikin
 Susan & Charles Ott
 Marcia & William Patterson, Jr.
 Nancy & David Rollins
 Lloyd & Betty Schermer
 Jacquie & David Schmidle

Carolyn & Jack Hoag
 JoAnne & Bob Hungate
 Karen Domnitch & Dennis Jones
 Nancy & John Kendall
 John & Margie Kerr
 Martha & John Lyons
 Sue & J.D. Shulec
 Joanne & Bill Spake
 Lynn & Richard Spivey
 Warren & Jane Tisdale
 Katharina Phillips & Sheldon Trubatch
 Nancy & Dick Walbert
 Sherri Brookema & Earl Wettstein
 Eileen & Charles Wright
 Jan & Keith Wunrow
 Ruth & Robert Zollinger

Partner Individual

Mary Lou Aries
 Norma Arnow
 Paula Baltes
 Lucette Barber
 Joyce Barkley
 Jane Barton
 Fred Borchardt
 Joyce Broan
 Esther Capin
 Coleen Carter
 Ellen Colon
 Sally Crawford
 Margot Denny
 Patty Doerr
 George Eberle
 Stephen W. Edwards
 Terry Filipowicz (Junior Partner)
 Judith Flynn

Lesley Goldfarb
 Wesley Green
 Barbara Gurwitz-Hall
 Jane Hallett
 Ruth Hanneley
 Joyce Harrington
 Susan Harris
 Cynthia Hedlund
 Pamela Henderson
 Esther Holloway
 Deborah Jassem
 Jane Johnson
 Dottie Kamin
 Rhoda Koepel
 Margaret Kordsiemon
 Susan Kornhaber
 Beatrice Lewis
 Elaine Litvak

Anne Lyman
 Linda Markus
 Lucy Masterman
 Caroline McConnell
 Rosana Meloy
 Georgann Munic
 Thelma Nathanson
 Janet Parkes
 Cynthia Patterson
 Carolyn Rivers
 Dee Ann Sakrison
 Suzanne Schoen
 Kate Shapiro
 Nina Susman
 Raymond Taylor
 Cecelia Thorner
 Sandy Van Handel

General Membership**Family**

Magda Baker
 Molly & Melvin Cohen

Individual

Jeffrey A. Berringer
 Kelly Kish
 Max McCauslin
 Margaret Wilson

Senior Couple

Barbara & Richard Barber
 Joanne & Keith Bauman
 Tamara & William Bearden

Senior Couple (con't)

Judy & Thomas Billings
 Carol & Harold Blatter
 Sarah & Elihu Boroson
 Nancy & David Clancy
 Renee & Craig Geiger
 Moyce & Murray Keshner
 Mary Sue & Richard Larsen
 Judy & Ken Nakari
 Hilda & Seymour Pepper
 Ling & Len Poli&ro
 Cynthia & John Reid
 Nancy & Arthur Swartz
 Kathleen & David Sharp

Jill & Gary Sisson
 Debbie & William Wallace
 Fleurette & Mark Wallach

Senior Individual

Rosemary Emery
 Donna Engelbert
 Betsy Farmer
 Sally Goodrich
 Alberta Johnson
 James Justice
 Sandra Karpelowitz
 Florence Koch
 Margaret Lacey

Senior Individual (con't)

Caryle Leska
Joan Lewelling
Judith Liebman
N. Skreko Martin
Leonora Nixon
Bella Nymo
Patricia Palmer

Sally Peashock
Herbert Ploch
Linda Ratcliffe
Safija Sarich
Johanna Stein
Nancy Stevens
Nancy Stroman

Charles Tampio
Ed Warner
Patricia Waterfall
John Wells
Pennee White
Joel Williams
Margaret York



UAMA ad to congratulate the University's 125th year



Photo by John Kelly, UAMA

Archive of Visual Art building renovation